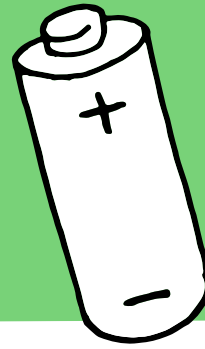


SYMBOLS FOR SIMPLE CIRCUITS



A **circuit** is a collection of connected devices that allows electricity to flow from a power source, typically a **battery**.

A battery has a positive point (+) and a negative point (-), and the electricity flows from one point to the other. The electrical flow travels through a **wire** and can power components such as a **bulb**, **motor**, or **buzzer**.

For a circuit to work, it must be complete and have no gaps. We can use a **switch** to create a point where it's possible to control the flow of electricity. The switch can be open (so the circuit's incomplete) or closed (to complete the circuit and make it work).

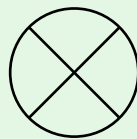
We can represent all the components in a circuit with a unique symbol:



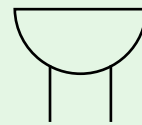
Battery



Wire



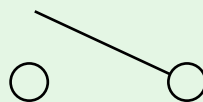
Bulb



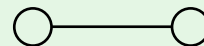
Buzzer



Motor



Switch (off)



Switch (on)

CLOSE UP!



Look at the battery's negative and positive points and see how they're represented in the symbol.

