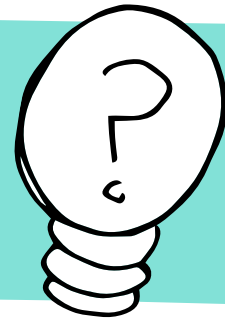


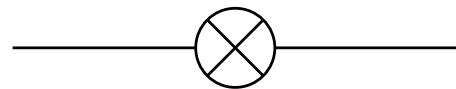
# SWITCHES AND BULBS



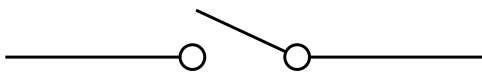
You'll remember from the 'Symbols for simple circuits' sheet that we can introduce components to a simple circuit and use special symbols to recognise what they are.

If we make a simple circuit with a bulb (symbol pictured right), we'll want a way of turning it 'on' and 'off'.

We can do this using a switch, and show it with the following symbols:

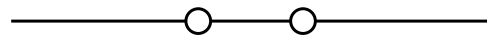


## OPEN (OFF)

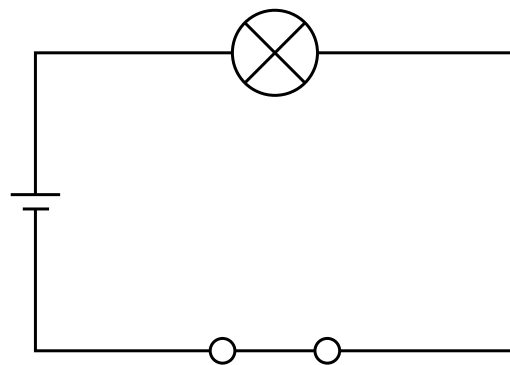
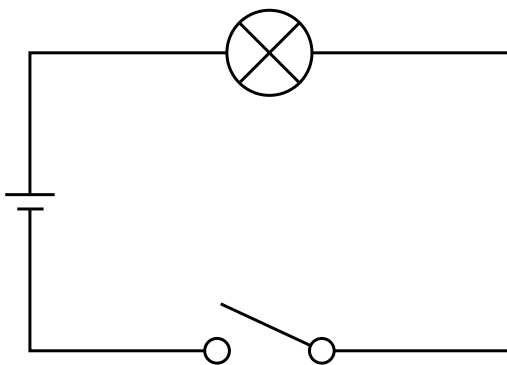


When the switch is open (off), the circuit's not complete, the electricity can't flow along the wire and the bulb won't light up.

## CLOSED (ON)



When the switch is closed (on), there's a complete circuit so the electricity from the battery can travel along the wire to light the bulb.



For more info and inspirational resources, visit  
[drax.com/resources/educational-resources](https://drax.com/resources/educational-resources)

