

Consultation Update

What is Consultation? Statutory

- As part of the DCO application process, there is a requirement for statutory consultation with various interested parties.

Consultation Strand	Consultees
s47	The local community and non-statutory interest groups.
s42	Statutory consultees as defined by the Planning Inspectorate: includes local authorities and government bodies such as the Environment Agency, landowners and significantly affected persons.
s48	Publicity (notices published in regional and national newspapers)

- Minimum PPL could do is to consult for a period of **28** days with the above consultees.
- Consultation Report brings out the key themes and concerns raised during consultation and explains how PPL has addressed them. A public document.

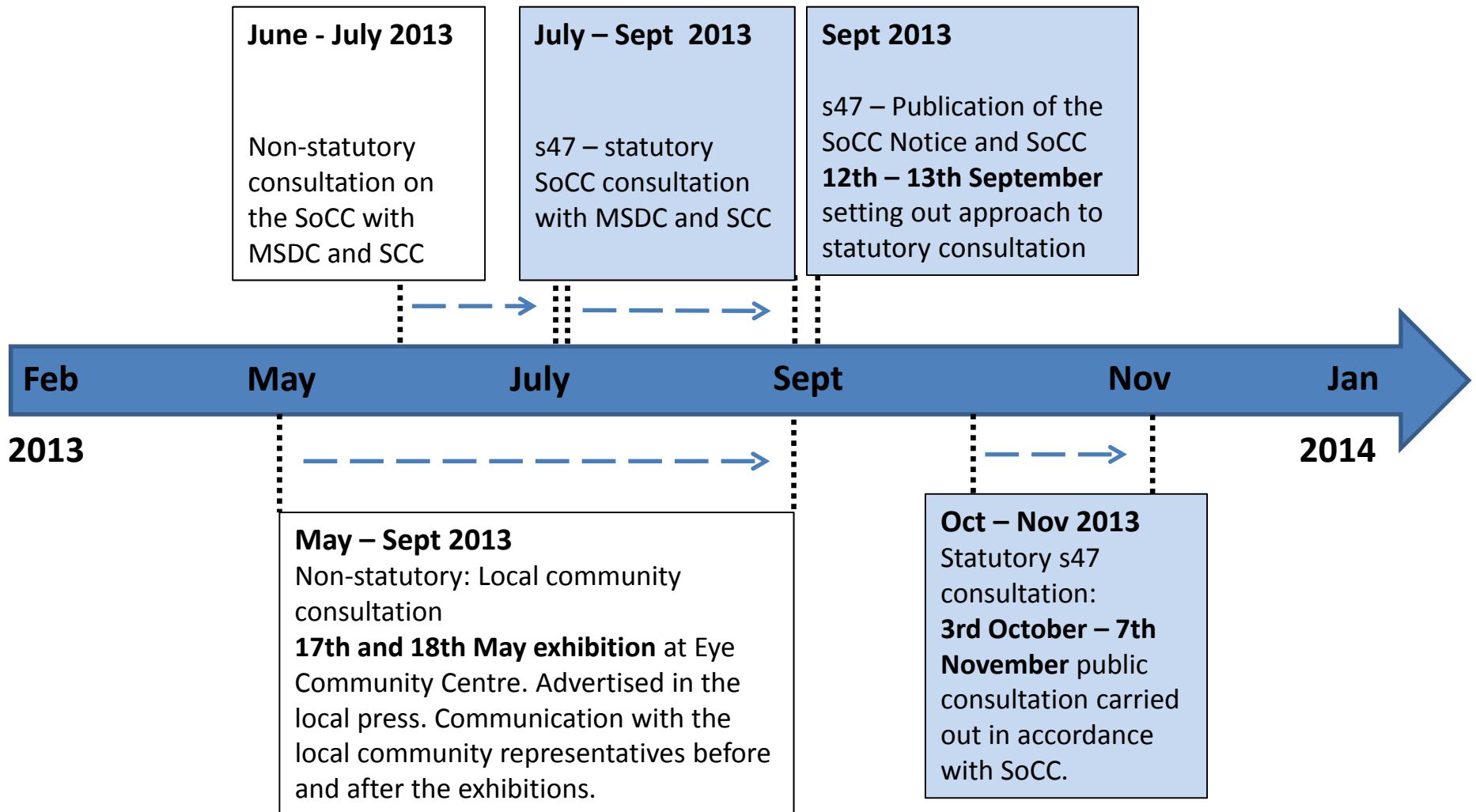
Applicant must undertake fair and reasonable pre-application consultation

What is Consultation? Non-statutory

Activities additional to the statutory requirements of the Planning Act 2008

- A developer may engage with the local community and any affected parties in a number of different ways but is not legally required to do so. This could be done by:
 - Meetings with local authorities, including Parish Councils
 - Non statutory exhibitions
 - Press releases, radio and TV interviews
 - etc
- This form of consultation at an early stage is a great way of understanding the key local concerns and may inform the evolution of the Project design.

Local community consultation timeline



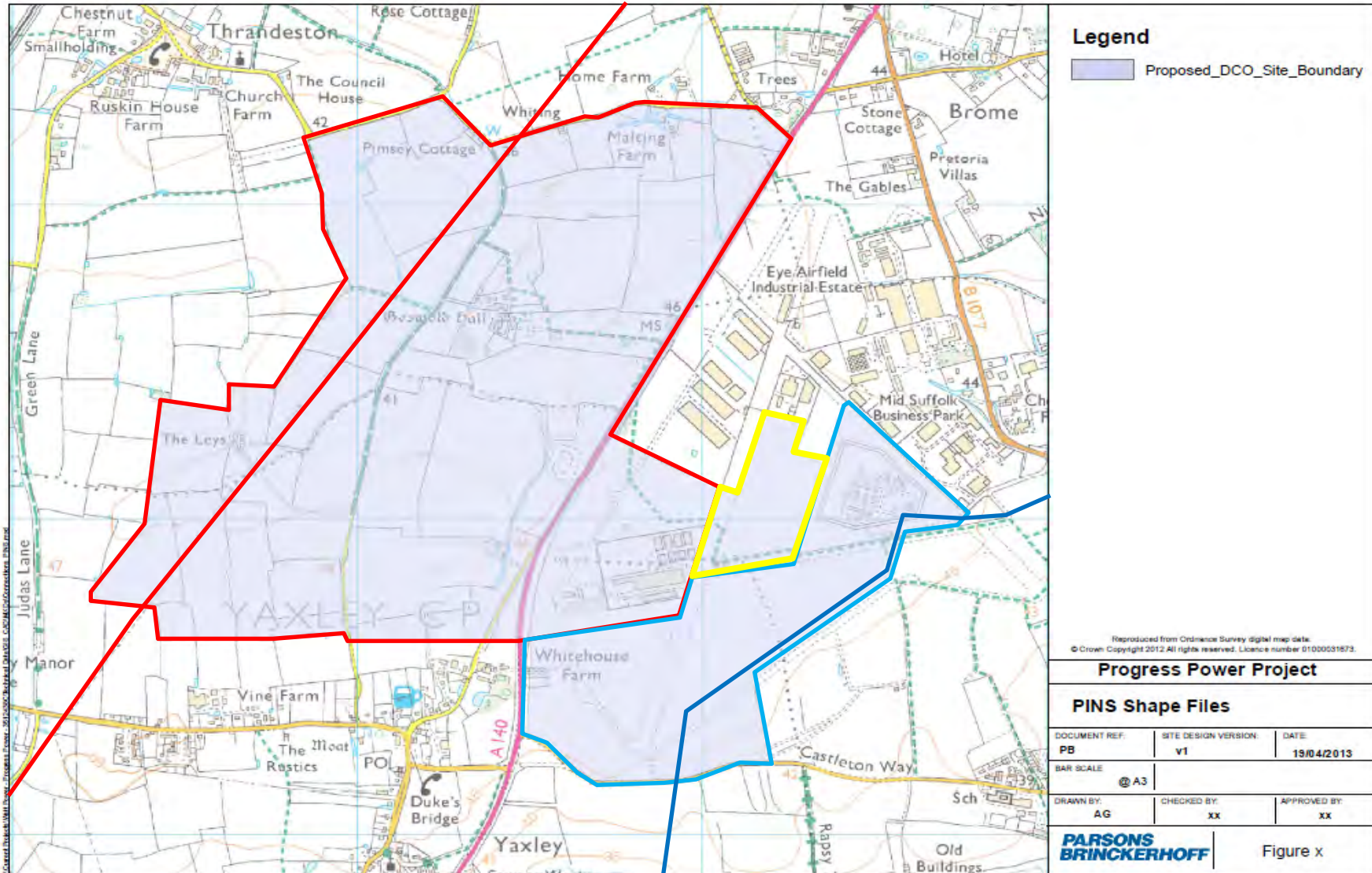
...and then there's Environmental Impact Assessment consultation

- Scoping
- Survey
- Assessment

- The first deliverable after the Scoping Phase is the Preliminary Environmental Information Report (PEIR) – this is a snap shot in time of where we are in the development process

- The PEIR was used as the basis for statutory consultation

Scoping Phase of Project – May 2013



Scoping Phase of Project – May 2013

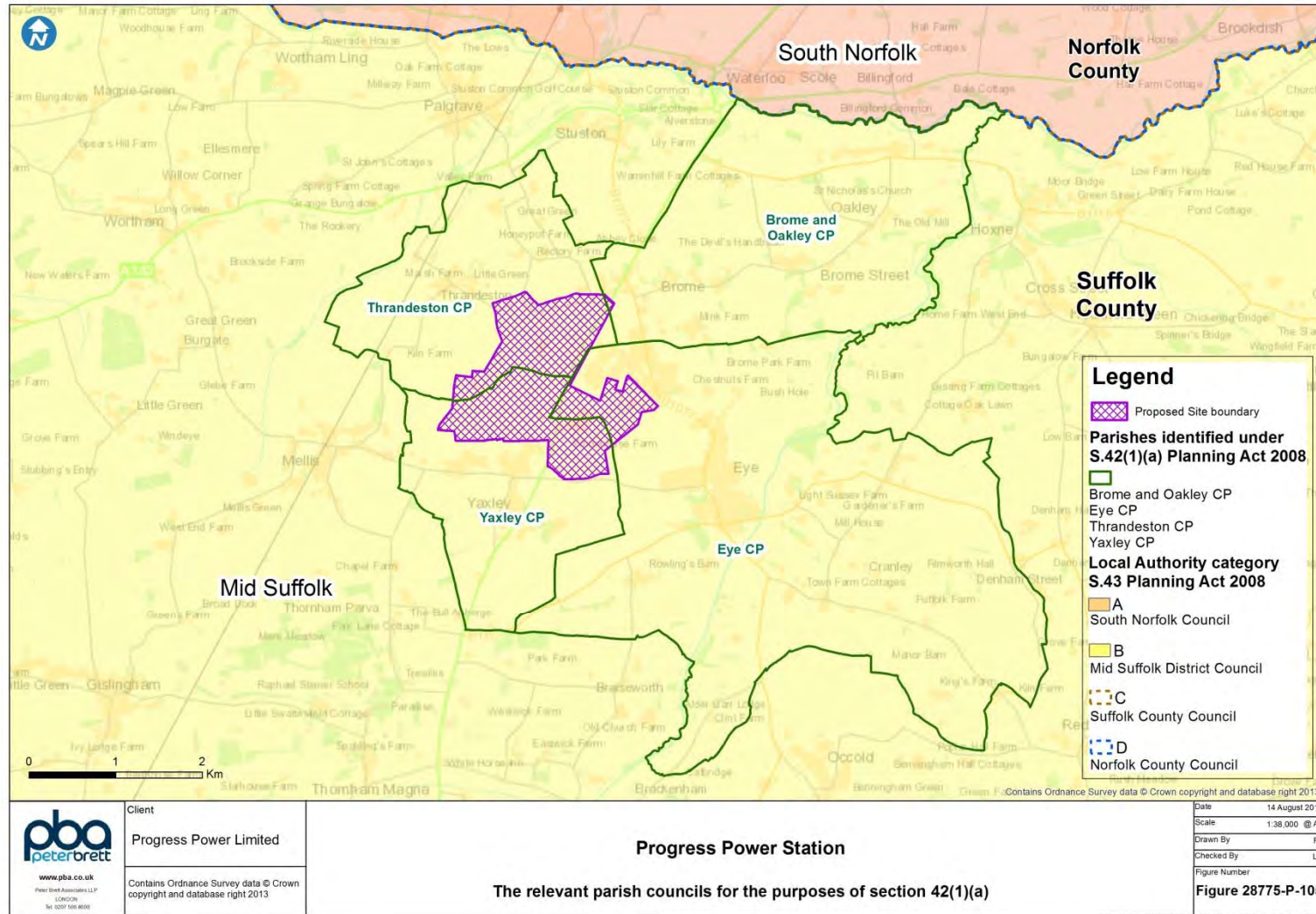
Item	Options
Technology	CCGT, SCGT, Gas Engines, CHP
Stack Height	Between 30 m and 90 m
Stack(s)	1 – 5
Gas Connection	5 routes - between 200 m and 2 km
Electrical Connection	OHL or Underground Cable ~ 1.5 km to 400 kV network

- Scoping Report submitted to Planning Inspectorate PINS on 17 May
- Engagement with MSDC, SCC, EA, EH, NE and a number of other statutory consultees including **Thrandeston, Yaxley, Brome and Oakley and Eye Parish Councils** (meeting held in early June).
- Scoping Opinion received from PINS on 26 June
 - Almost 80 Statutory Consultees

Scoping Phase of Project – May 2013



Parish Councils that are Statutory Consultees



- Introduced Project to the public in May 2013 – as soon as we were able to.
- Purpose was to begin raising awareness of Project proposals.
 - PPL appreciate the inherent tension in undertaking early consultation whilst also providing sufficient information to enable consultees to comment.
 - Hence clear descriptions of options under consideration and explaining the on-going nature of the design development and consultation processes

Examples of some of the activities undertaken

Meetings	
25/04/13	briefing meeting with MSDC councillors and senior officers
17/05/13	meeting with SCC councillors
05/06/13	meeting with councillors from statutory Parish Councils regarding the EIA Scoping Report

Written	
02/05/13	written notification of project to SCC councillors, the constituency MP and MEP
03/05/13	written notification to parish council clerks close to the site
06/05/13	letters to all 52 businesses located on Eye Airfield

Non-statutory Local Community Consultation



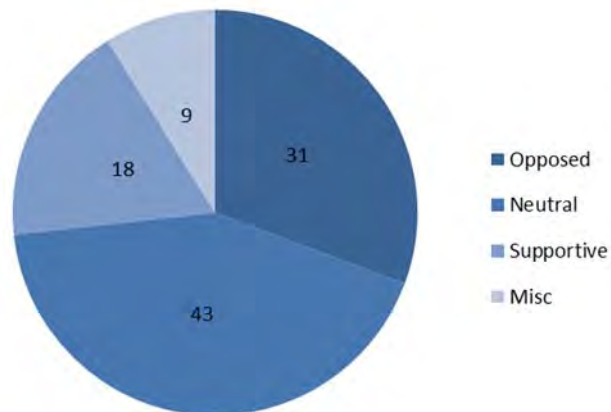
Adverts / Posters	
w/c 6 th May	advertisements in the Diss Express, Bury Free Press, EDP and EADT
w/c 13 th May	advertisements repeated as above
w/c 6 th May	posters on local parish noticeboards and in local shops in the Eye area giving notice of the exhibitions

Press Relations	
06/05/13	press release to local media, including the Diss Mercury, Bury Free Press, Eastern Daily Press (EDP), the East Anglian Daily Times (EADT) and BBC East; the release resulted in media reports (print, TV, radio and social media) about the project and the planned exhibitions

Public Exhibitions	
17/05/13	exhibition at Eye Community Centre
18/05/13	exhibition at Eye Community Centre

Local Community Exhibitions Feedback

- 137 people attended the May 2013 local community exhibitions.
- 100 feedback forms were completed and returned.



May 2013 local community consultation – respondent's feelings on the outline proposals

- Environmental Impacts
- Detailed Information
- Detailed Design

May 2013 local community consultation – dominant themes

Examples of further activities undertaken

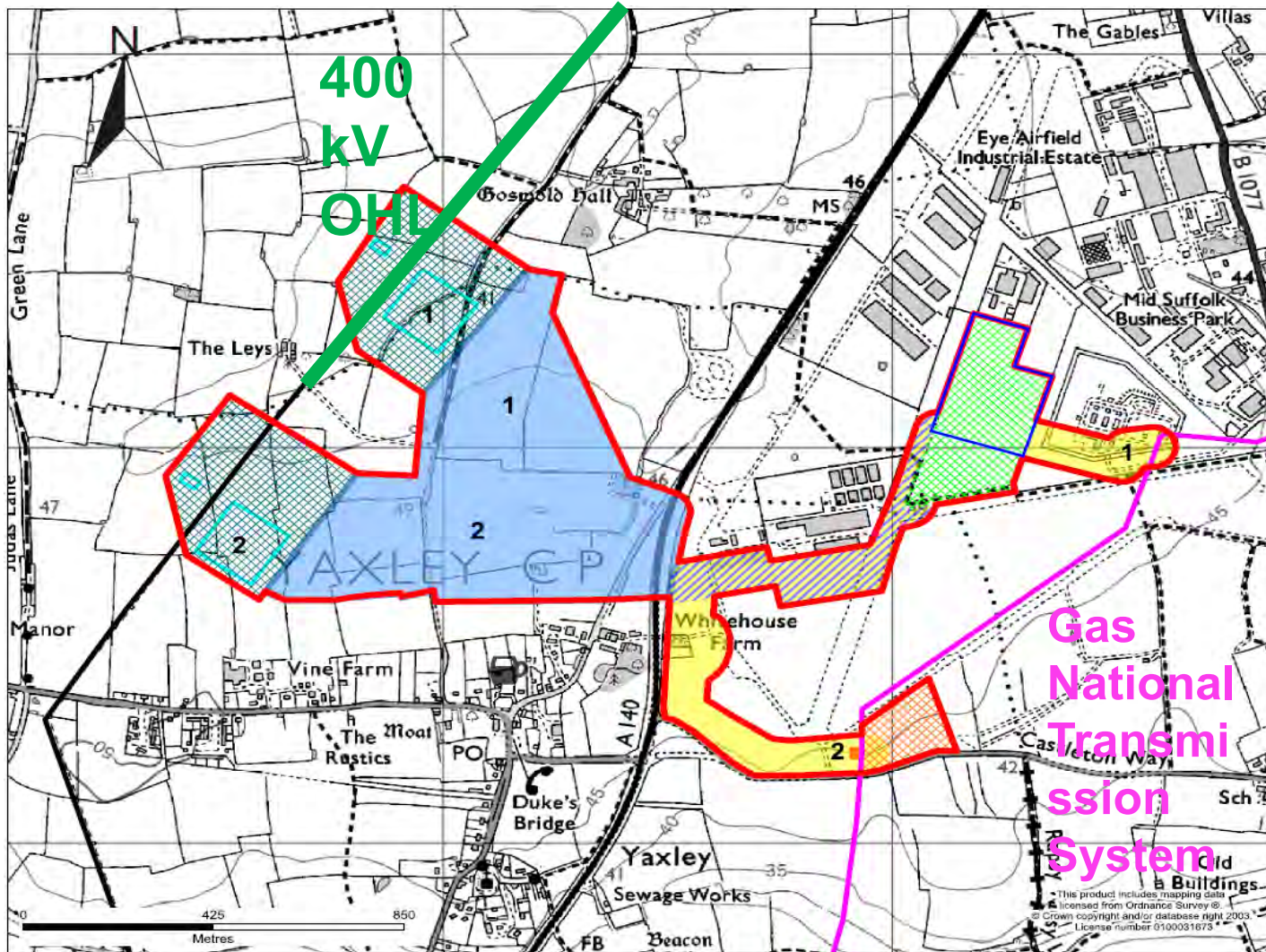
Date	Activity and consultee
13/06/2013	Introductory meeting with the Planning Inspectorate.
22/07/2013	Meeting with the Planning Inspectorate to discuss: Approach to the Project description and Approach to the draft DCO.
29/08/2013	Meeting with MSDC Councillors and Officers; SCC Councillors and Officers; Eye Town Council Councillor. Providing an update on Project developments since May
18/09/2013	Eye Town Council Meeting.. 9 Eye Town Councillors were present, as well as the Clerk of Eye Town Council, MSDC Councillor Flatman and 15 members of the general public. The Eye deputy Mayor chaired the meeting.
25/09/2013	Meeting between PPL and Dr Dan Poulter MP and Adam Burt (constituency officer).
25/09/2013	The PPL Project director attended a Suffolk Association of Local Councils (North) meeting at Eye Town Hall and gave a presentation about the Project.

PEIR Phase of Project – September 2013



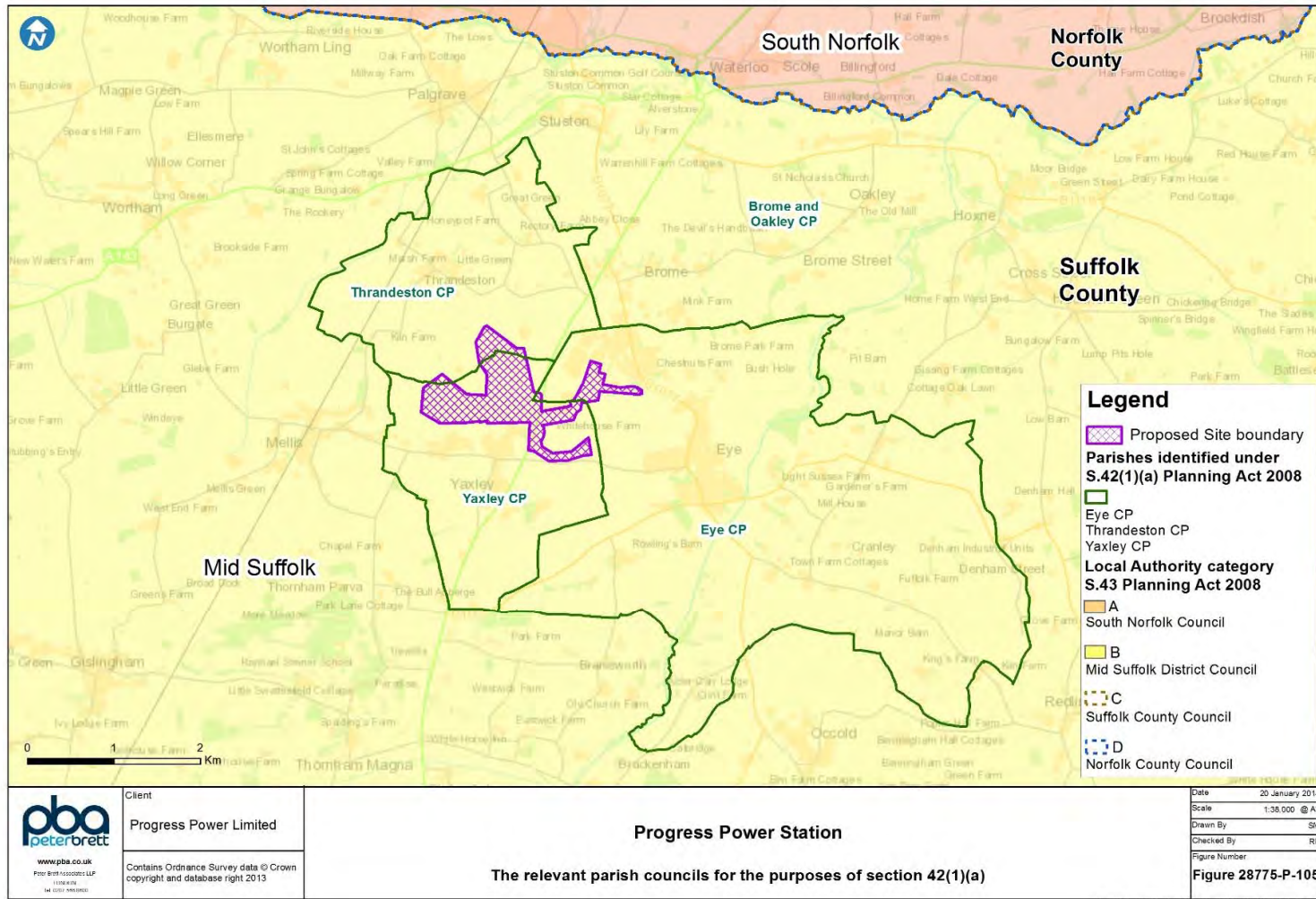
Item	Options May 2013	Options September 2013
Technology	CCGT, SCGT, Gas Engines, CHP	SCGT
Stack Height	30 m – 90 m	20 m – 30 m
Stack(s)	1 – 5	1-5
Gas Connection	5 routes - between 200m and 2km	2 routes between 200m and 1.6km
Electrical Connection	OHL or Underground Cable ~ 1.5km to 400kV network	Underground Cable

PEIR Phase of Project – September 2013



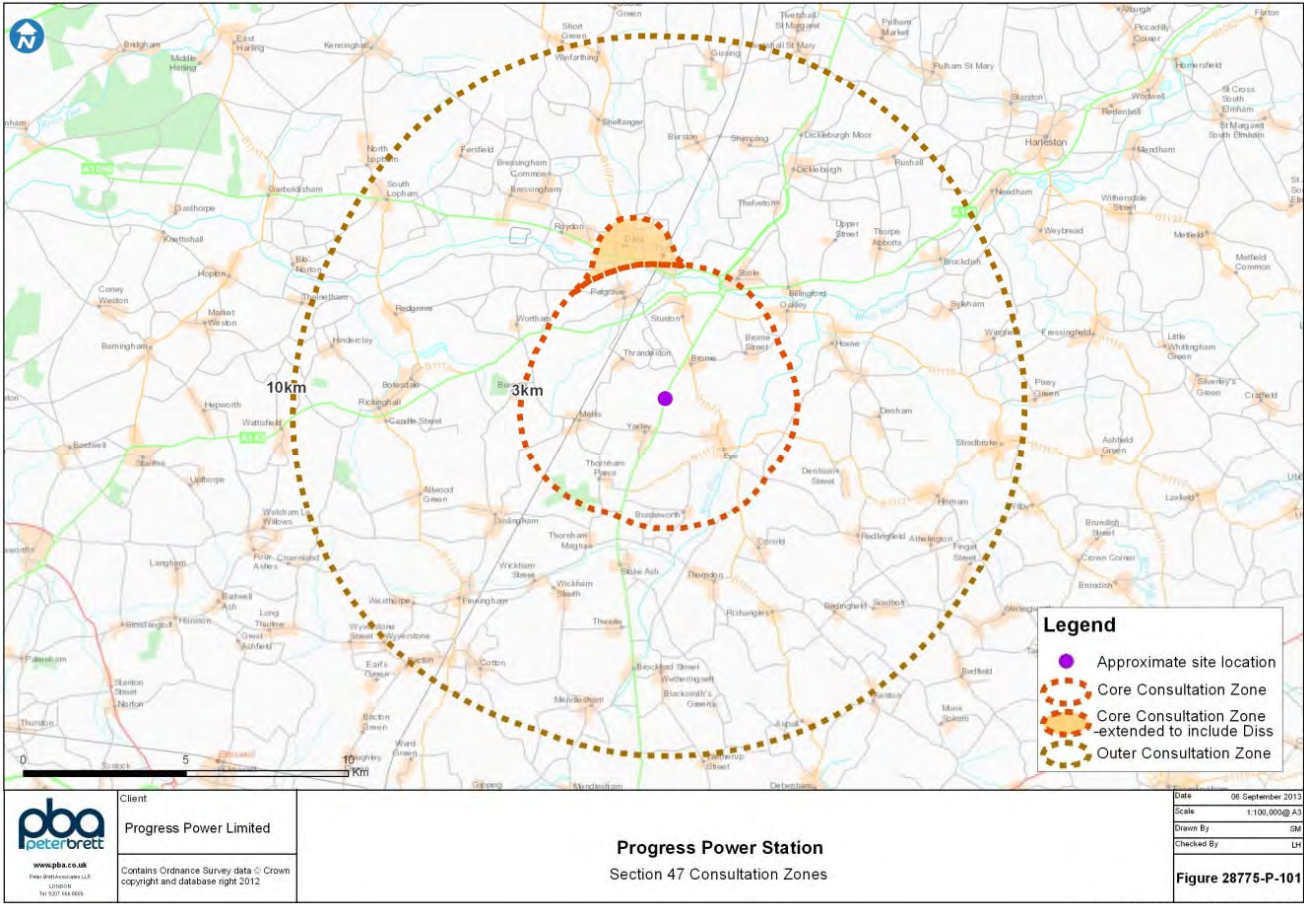
PEIR Phase of Project – September 2013

Parish Councils that are Statutory Consultees



- Sets out PPL's overall approach to local community consultation.
- Developed in consultation and agreed with MSDC and SCC:
 - Exhibition locations
 - Consultation activities
 - Zones of Consultation
 - the Core Consultation Zone (CCZ)
 - Outer Consultation Zone (OCZ)
- SoCC notice published in local newspapers in Sept 2013
- SoCC available at local community venues and online

Consultation Zones



Core Consultation Zones (CCZ) and Outer Consultation Zones (OCZ) as agreed with MSDC and SCC

Aim of consultation

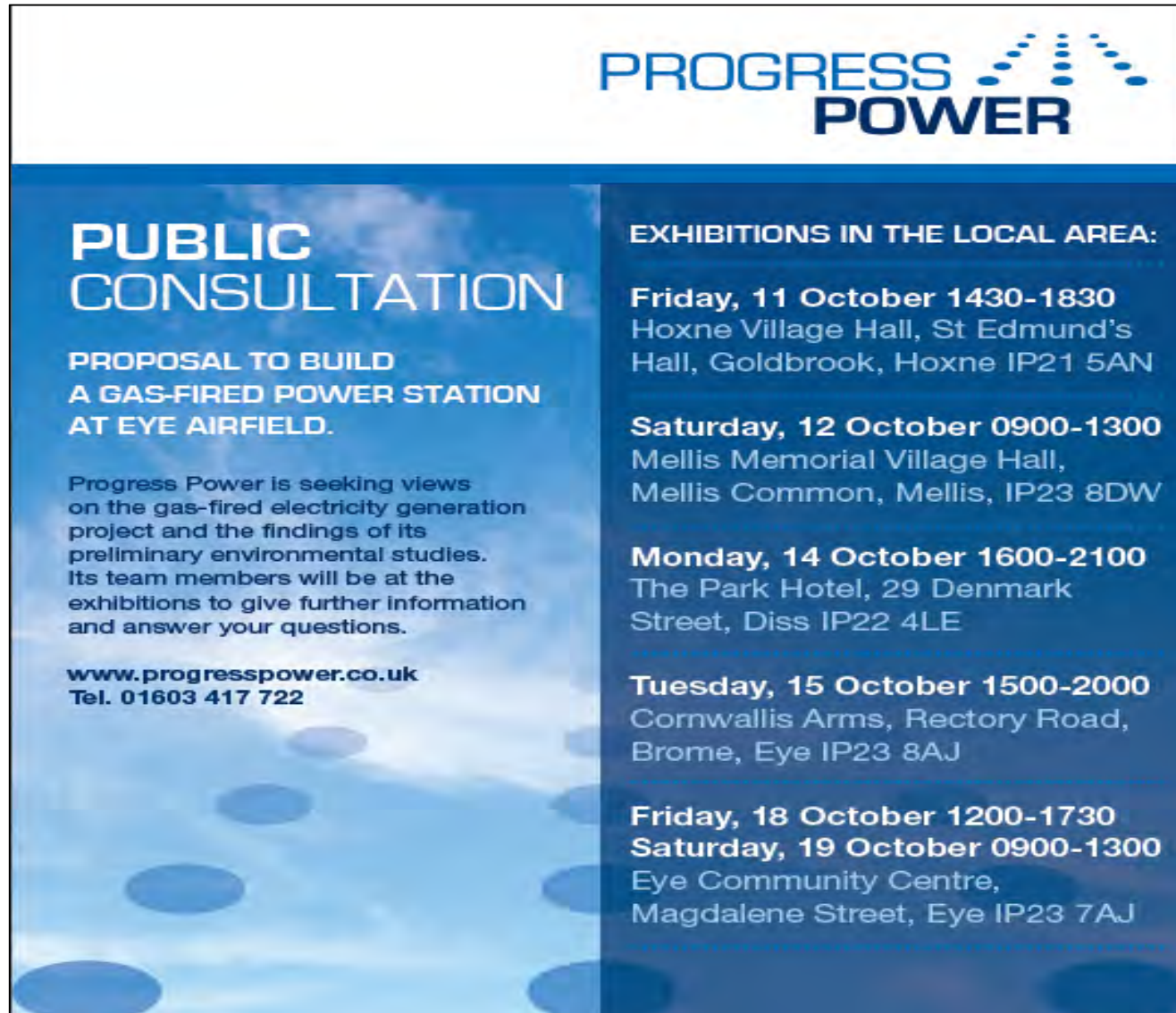
- The aim of the consultation as set out in the SoCC was to seek views on:
 - the Project, including the location and layout of the proposed power generation plant;
 - the options for the location and layout of the electrical connection compound;
 - the route options of the gas connection; and
 - the findings of the preliminary environmental studies including construction and operation impacts, for example, the visual impacts of the Project.

Delivering the SoCC

Thursday 3rd October 2013 – Thursday 7th November 2013

- PPL delivered consultation in line with the SoCC
 - 35 days, in excess of 28 day minimum
 - Exhibitions
 - Availability of PEIR and PEIR NTS at local libraries and council offices
 - Adverts in newspapers
 - Local radio reports
 - Local press articles and twitter
 - Posters and leaflets in local community venues as well as schools and Parish noticeboards
 - Letter to MP and neighbouring MPs
 - Leaflet distribution
- PPL is aware some households reported not receiving a leaflet
 - Extra hand delivery of leaflets to villages that were hosting exhibitions
- Added exhibition date at Yaxley in response to parish councillor and local community requests. Included a further press release

Consultation exhibition timetable



The poster features the Progress Power logo at the top right. The left side has a blue background with white text, and the right side has a dark blue background with white text. The text is organized into sections for public consultation details and a list of exhibition locations and times.

**PROGRESS
POWER**

**PUBLIC
CONSULTATION**

**PROPOSAL TO BUILD
A GAS-FIRED POWER STATION
AT EYE AIRFIELD.**

Progress Power is seeking views on the gas-fired electricity generation project and the findings of its preliminary environmental studies. Its team members will be at the exhibitions to give further information and answer your questions.

**www.progresspower.co.uk
Tel. 01603 417 722**

EXHIBITIONS IN THE LOCAL AREA:

Friday, 11 October 1430-1830
Hoxne Village Hall, St Edmund's Hall, Goldbrook, Hoxne IP21 5AN

Saturday, 12 October 0900-1300
Mellis Memorial Village Hall, Mellis Common, Mellis, IP23 8DW

Monday, 14 October 1600-2100
The Park Hotel, 29 Denmark Street, Diss IP22 4LE

Tuesday, 15 October 1500-2000
Cornwallis Arms, Rectory Road, Brome, Eye IP23 8AJ

Friday, 18 October 1200-1730
Saturday, 19 October 0900-1300
Eye Community Centre, Magdalene Street, Eye IP23 7AJ

Exhibition attendance

Location	Date	Attendance	Distance to PGP	Distance to Substation
Hoxne Village Hall (Outer Consultation Zone)	Fri 11 Oct	10 people	~5.2 km	~6.2 km
Mellis Memorial Hall	Sat 12 Oct	79 people	~3 km	~1.2 km
Park Hotel, Diss	Mon 14 Oct	21 people	~3.8 km	~3.7 km
Cornwallis Hotel, Brome	Tue 15 Oct	20 people	~1.2 km	~1.7 km
Eye Community Centre	Fri 18 Oct	50 people	~1.2 km	~2.5 km
	Sat 19 Oct	55 people		
Yaxley Village Hall (additional exhibition)	Mon 21 Oct	97 people	~1.3 km	~0.5 km

Exhibition attendance



Exhibition at Mellis Memorial Village Hall

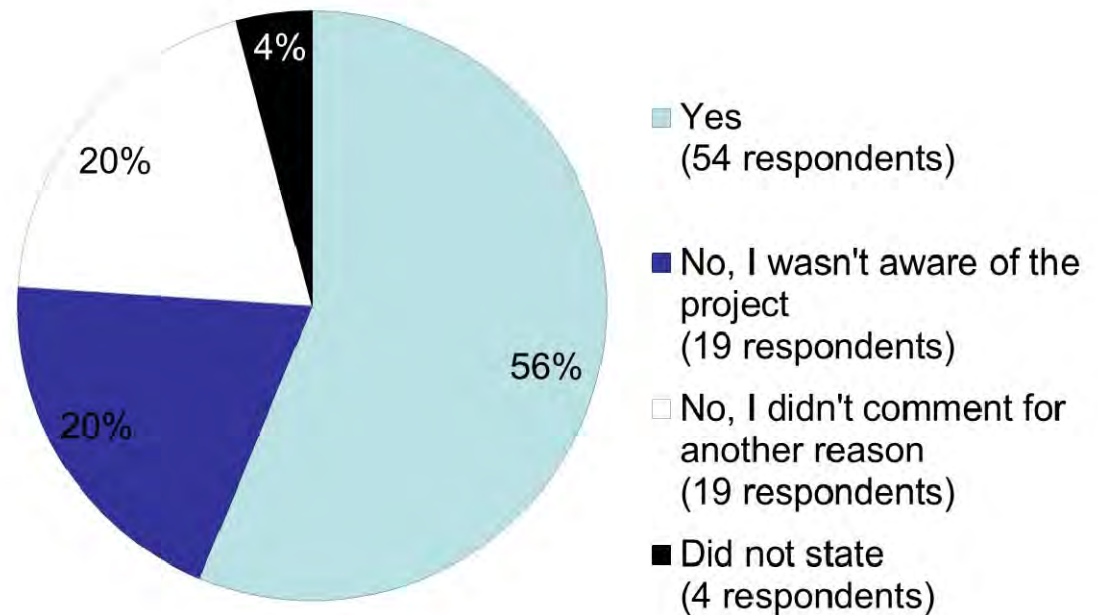


Exhibition at Eye Community Centre

Summary of feedback

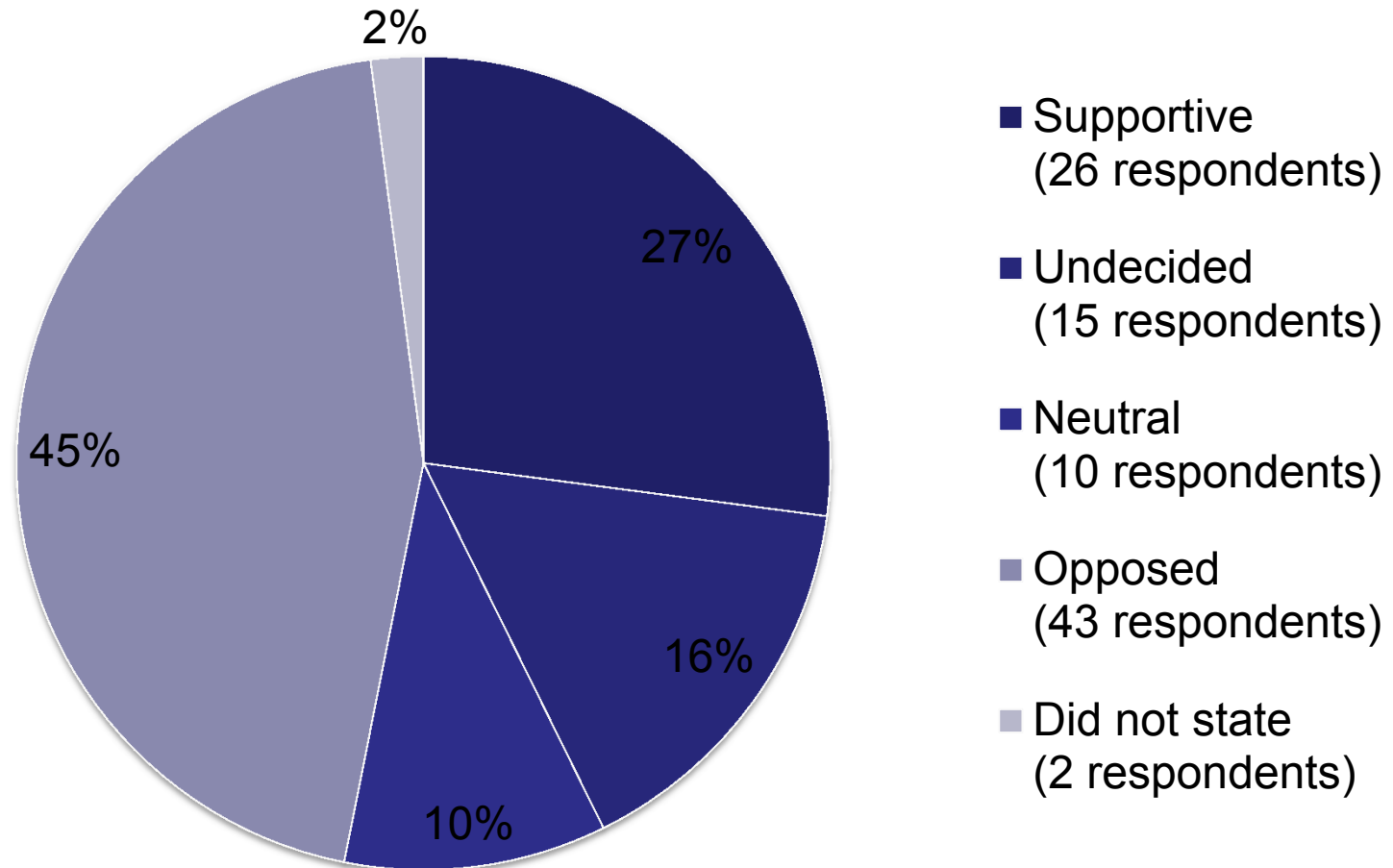
157 responses were received from the local community

Feedback medium	No.
Exhibition feedback forms	72
Freeform responses (via email or letter)	68
Freepost response form on the leaflet	24



Whether respondents commented during the previous phase of consultation

Feelings towards the Project



The 3 key themes during the consultation were:

- Traffic, Transport and Access
- Landscape and Visual Impact
- Noise and Vibration
- The biggest concern related to Traffic, Transport and Access

Electrical Connection Access Arrangements and Electrical Connection Compound Location

- Following the review of responses received during the Project's period of statutory consultation PPL is publishing Supplementary Access Information and details about the proposed location for the Electrical Connection Compound.
- The non-statutory information update period runs from **6 February – 6 March 2014**.
- Information available on PPL website and at local libraries and MSDC's Needham Market Office.