



ABERGELLI POWER PROJECT

Abergelli Farm,
Felindre, Swansea

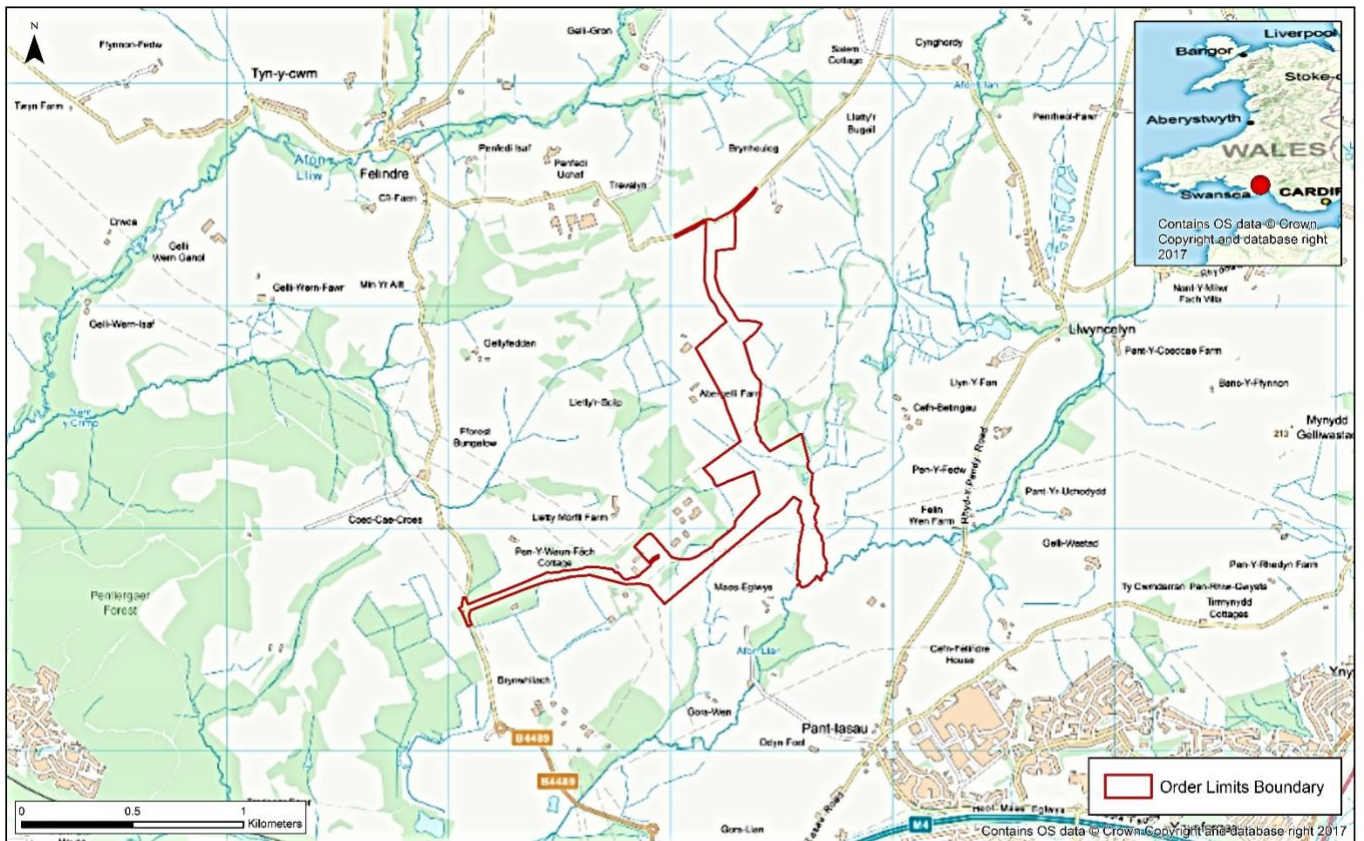
Statement of Community Consultation

January 2018

www.abergellipower.co.uk

Statement of Community Consultation

This Statement of Community Consultation (“SoCC”) is published in connection with a proposed gas-fired power station, including its gas and electrical connections, at Abergelli Farm (the “Project”). It explains how individuals living and working locally, as well as other interests such as local businesses and local civic/community organisations, can comment on the proposals to construct and operate the Project. The Project Site is situated north of Swansea in the City & County of Swansea (north of M4, Junction 46), approximately 1km southeast of Felindre and 1.5km north of Llangyfelach.



Open OS licence text: Contains Ordnance Survey data (c) Crown copyright and database right 2016.		Client 	1:21,117 @ A4 08/11/2017 Drawn: KB Checked: RM	Abergelli Power Station Location Plan
---	--	------------	---	---

APL: location plan and application boundary

The Project was initially taken through the first stages of the Development Consent Order (“DCO”) application process in 2014. However, in March 2015, the Project was put on hold due to market and political uncertainty. Under new ownership (see below) the Project is now once again being

taken forward.

The capacity of the Power Generation Plant will be up to 299 MW of electricity. As such, it is classified as a Nationally Significant Infrastructure Project (NSIP) under the Planning Act 2008 (as amended) (the “Planning Act 2008”). This requires a DCO, granted under the Planning Act 2008 to build and operate, granted by the Secretary of State for Business, Energy and Industrial Strategy.

This SoCC is part of a consultation process, required by the Planning Act 2008. This SoCC explains how Abergelli Power Limited (“APL”), the promoter of the Project, proposes to consult people living in the vicinity of the Project, businesses and other organisations about the Project, in advance of submitting an application for a DCO for the Power Generation Plant in Q2 2018. The consultation process is designed to enable informed, detailed and two-way communication and responses will be taken into account prior to the submission of the application for a DCO.

APL carried out both statutory and non-statutory consultation as part of its work in 2014. As part of the 2014 statutory consultation, a SoCC was published after having been consulted on with the local planning authority and this SoCC is closely modelled on the 2014 SoCC. APL has had regard to the responses received as part of the 2014 non-statutory and statutory consultation and these have influenced the further iteration of the Project design that is now being consulted on in 2018. More information about the 2014 Consultation activities and feedback can be found in the Summary of 2014 Consultation Activities, which is being published alongside this SoCC. Both documents are available from APL or via its website www.abergellipower.co.uk. The website is bilingual, in both English and Welsh.

APL has consulted City & County of Swansea Council as the local planning authority about the content of this SoCC and has had regard to the council’s response.

APL is a subsidiary business of Drax Group plc (“Drax”), a longstanding British energy company that generates around 7% of the country’s electricity. In addition to operating the largest power station in the country in North Yorkshire, Drax is seeking to develop three other flexible gas fired power stations sites across the country: one at Eye Airfield in Suffolk, one near Aberdare in south Wales and the third near Millbrook in Bedfordshire. Further information on Drax can be found at www.drax.com.

This Statement explains:

- Some details about the Project;
- How APL is publishing preliminary environmental information about the Project;
- How APL is going to consult local people and communities about the Project and what activities will be undertaken to give them access to information about the proposal and help them to understand what particular aspects of the Project may mean to them, enabling them to provide informed feedback;
- How people can become involved in influencing the Project before a DCO application is submitted by putting forward their views, particularly regarding specific options under consideration; and
- How people can provide feedback to APL from consultation activities and ensure that they are informed about the Project.

The Project

The key details of the proposed Project are:

- The construction of a Power Generation Plant with a rated electrical output of up to 299 MW. The plant will have one stack, of up to 45 m in height. The nearby transmission towers are approximately the same height.
- An Access Road to the Project Site, formed by extending an existing access road from the B4489
- The Power Generation Plant includes provision of a Laydown Area for temporary use during construction, and a permanent Maintenance Compound.
- The Power Generation Plant will produce electricity from natural gas – designed as a ‘peaking plant’ and would operate for up to a maximum of 2,250 hours in given year, provided that the five-year rolling average does not exceed 1,500 hours per year.
- The lifespan of the Project is anticipated to be 25 years.
- The Project will include construction of a new underground electrical connection (up to 1km in length) to the nearby National Grid Electricity Transmission System and the construction of a new underground pipeline (up to 1.4km in length) to bring natural gas to the Power Generation Plant from the National Gas Transmission System (although development consent for the gas pipeline and electrical connection will not be sought as part of the DCO application).
- The Project will create approximately 150 jobs during a construction period lasting two years and up to 15 permanent jobs once commercial operations have begun.
- It responds to the UK Government’s need for new gas generation in order to underpin the country’s energy security and its transition to a low-carbon economy;

- The station would emit about 50% less carbon dioxide (CO₂) than an equivalent sized coal-fired power plant, and is designed to operate flexibly so that it can respond quickly and efficiently to short-term variation in customer demand and intermittent output from wind and solar power generation.

It is acknowledged that during construction and operation there is potential for adverse effects on some local communities and the environment, for example noise and traffic during the construction phase, and the visual effects of the new stack. An Environmental Impact Assessment (EIA) is being undertaken; the EIA seeks to understand and to minimise the potential effects of the Project's construction and operation. More information on this process is provided below. The EIA process is also considering the potential positive effects of the operation of the Project.

The Planning Process

DCO applications for NSIPs are submitted to the Planning Inspectorate which will process and examine the application before making a recommendation to the relevant Secretary of State. The final decision on the application is made by the Secretary of State and if it is successful, a DCO will be made.

In the context of generating stations in Wales, the Planning Act 2008 restricts what can be applied for through the DCO process to development that is integral to and forms part of the NSIP. For the APL Project, the integral elements are the Power Generation Plant, the Laydown Area/Maintenance Compound and the Access Road. The APL DCO application will not seek consent to construct and operate the gas or electrical connections; instead a planning application will be made under the Town and Country Planning Act 1990 or permitted development rights will be utilised (as applicable). However, compulsory acquisition powers for the land and rights required to construct, operate and maintain the gas and electrical connections will be included within the DCO application.

The Government's policies in relation to NSIPs are set out in National Policy Statements (NPSs). The Project has been developed with regard to the relevant Energy NPSs, in particular EN-1 (Energy), EN-2 (Fossil Fuel Electricity Generating Infrastructure) and EN-5 (Electricity Networks Infrastructure). EN-1 states that *"gas will continue to play an important role in the electricity sector-providing vital flexibility to support an increasing amount of low-carbon generation and to maintain security of supply"*.

When determining a DCO application, the Secretary of State must have regard to the relevant NPSs and must make a decision in accordance with these unless they are satisfied that the adverse impact of the Project would outweigh its benefits.

When considering whether to accept an application for examination, the Planning Inspectorate must be satisfied that the applicant has undertaken effective pre- application consultation in accordance with the provisions of the Planning Act 2008. Pre-application consultation is essential in allowing APL to understand and seek to minimise the effects of the Project. APL is required to submit a Consultation Report with its application for a DCO. This report will include details of the local community feedback received (both in 2014/2015 and in 2018), explain how APL has had regard to the feedback and will detail how APL has complied with the consultation requirements of the Planning Act 2008.

The community consultation described in this statement is carried out under Section 47 of the Planning Act 2008. It is in addition to consultation that will be carried out with specific statutory consultees (such as statutory nature conservation bodies) and those with relevant interests in land (including owners and occupiers within the Project boundary) under Section 42 of the Planning Act 2008. It is also in addition to wider publication of the proposed Project under Section 48 of the Planning Act 2008.

Information on the planning process for NSIPs and the NPSs can be found at:

<http://infrastructure.planningportal.gov.uk>

Environmental Information & Effects

The Project will be designed and developed to meet or exceed current quality, safety and environmental standards and efforts will be made to minimise its effect on the local environment, during its construction, operation and decommissioning. The extent and scale of the Project and APL's proposals to mitigate its effects will be amongst the issues considered by the Planning Inspectorate on behalf of the Secretary of State.

Because of the nature and size of the Project, APL is undertaking an EIA pursuant to the Infrastructure Planning (Environmental Impact Assessment) Regulations 2009 (EIA Regulations 2009). Therefore, the project is classed as an EIA development. The Project falls under the EIA Regulations 2009 regime and not the Infrastructure Planning (Environmental Impact Assessment)

Regulations 2017 (EIA Regulations 2017) regime. This is because a scoping opinion was requested from the Secretary of State under the EIA Regulations 2009 and prior to the date on which the EIA Regulations 2017 apply to projects. This means that, in accordance with the transitional arrangements at Regulation 37 of the EIA Regulations 2017, the EIA Regulations 2009 will continue to apply to the Project.

The EIA considers the potential effects of the Project including: air quality; noise and vibration; ecology; water quality and resources; geology and ground conditions; landscape and visual; traffic, transport and access; historic environment; and socio- economics.

APL has consulted with various statutory bodies concerning the scope of the EIA, including the local authority, Natural Resources Wales (NRW), the South Wales Trunk Road Agency, and utility providers. A request for a Scoping Opinion was submitted to the Planning Inspectorate on June 25th 2014, accompanied by a Scoping Report. The Scoping Report outlined which environmental topics would be covered by the EIA and how the assessments would be undertaken. The Planning Inspectorate issued its formal Scoping Opinion on 1st August 2014.

These documents are available on the Abergelli Power website (www.abergellipower.co.uk) and via the dedicated section on the Planning Inspectorate's website: <http://infrastructure.planningportal.gov.uk/projects/wales/abergelli-power/>

As part of the pre-application consultation materials on the proposed Project, APL will publish a Preliminary Environmental Information Report (2018 PEIR) (updated from the PEIR published as part of the 2014 statutory consultation) and an associated non-technical summary (2018 NTS). The 2018 PEIR will present the information gathered to date and provide the results of APL's preliminary findings of the assessment of the likely significant environmental effects of the Project. It will not set out the final findings but will include information on provisional mitigation measures. In addition, a No Significant Effects Report will be published which considers the effects of the Project on European Designated sites in accordance with the Habitats Regulations.

During consultation, APL will make available details on landscaping proposals and other measures to mitigate the Project's impact. APL will provide copies of the 2018 PEIR and its associated 2018 NTS to City & County of Swansea Council as the local planning authority. The 2018 NTS will also

be available in Welsh. The 2018 PEIR, 2018 NTS and Welsh language 2018 NTS and No Significant Effects Report documents will also be made available at: local libraries; at public exhibitions held as part of the consultation process and on the APL website. For more information on the materials to be made available, where and in which format, see ***How will we consult?*** below.

When the EIA process is complete and APL submits its application for a DCO, it will be accompanied by an Environmental Statement. This will report on the likely significant environmental effects of the Project identified in the EIA and will explain the mitigation measures to avoid or reduce these.

Public Consultation

The views of the local community about the Project are important. In May/June 2014, APL carried out a non-statutory consultation process. In June 2014, APL shared its plans with the public at three exhibitions held in Clydach, Felindre and Tircoed, following distribution of a letter of introduction about the Project to approximately 5,500 households and businesses in the immediate vicinity of the Project Site. A total of 94 people attended the three exhibitions and provided comments on the proposed Project, community benefits and consultation process. In October/November 2014, a 35 day period of statutory public consultation was carried out, with four public exhibitions held in the local area – at Llangyfelach, Clydach, Felindre and Tircoed, following distribution of a leaflet about the Project and consultation programme to households, businesses and institutions in the Core Consultation Zone (CCZ). A total of 106 people attended the four exhibitions and provided a range of feedback, predominantly relating to the need for the Project, site selection process, consultation process, community benefits and potential landscape, transport and socio-economic impacts. APL reviewed and responded to the comments received throughout the 2014 consultation and have taken the comments into account in the evolution of the Project.

The various consultation activities during 2014 helped inform the Project's development and led to APL's decision to:

- Reduce the number of stacks from a maximum of five to one;
- Change the maximum stack height from 40 m to 45 m;
- Consolidate the Generating Equipment Site to the north of the Water Main;

- Select an access route from the B4489 to the west of the Generating Equipment instead of the access route from the north; and
- Select an underground cable option for the Electrical Connection, instead of an overhead line option.

a. *What are we now consulting on and when?*

In March 2015, APL chose to put on hold its plans for the Project and notified interested parties by letter and information posted on the Project website that this was the case. Under the ownership of Drax, APL now wishes to resume the DCO application process for the Project. Accordingly, and given APL's open and engaged approach to consultation in 2014, APL wishes to commence a second phase of statutory consultation, commencing on 16th January 2018 (and finishing on 19th February 2018), seeking views on the preliminary environmental information presented about the Project as well as on other key elements of the Project listed below. After responses have been considered, the design will be finalised and the application for a DCO will be submitted.

Responses will be invited on:

- The Power Generation Plant, as currently proposed, including changes since the 2014 consultation;
- The proposed route option(s) for the Access Road;
- The indicative layout of the Power Generation Plant within the Project Site; and
- The preliminary findings of the assessment as to the likely significant environmental effects of the Project;

The consultation explained in this Statement will run for 35 days from 16th January until 19th February 2018. Comments about the Project must be received by APL by this date.

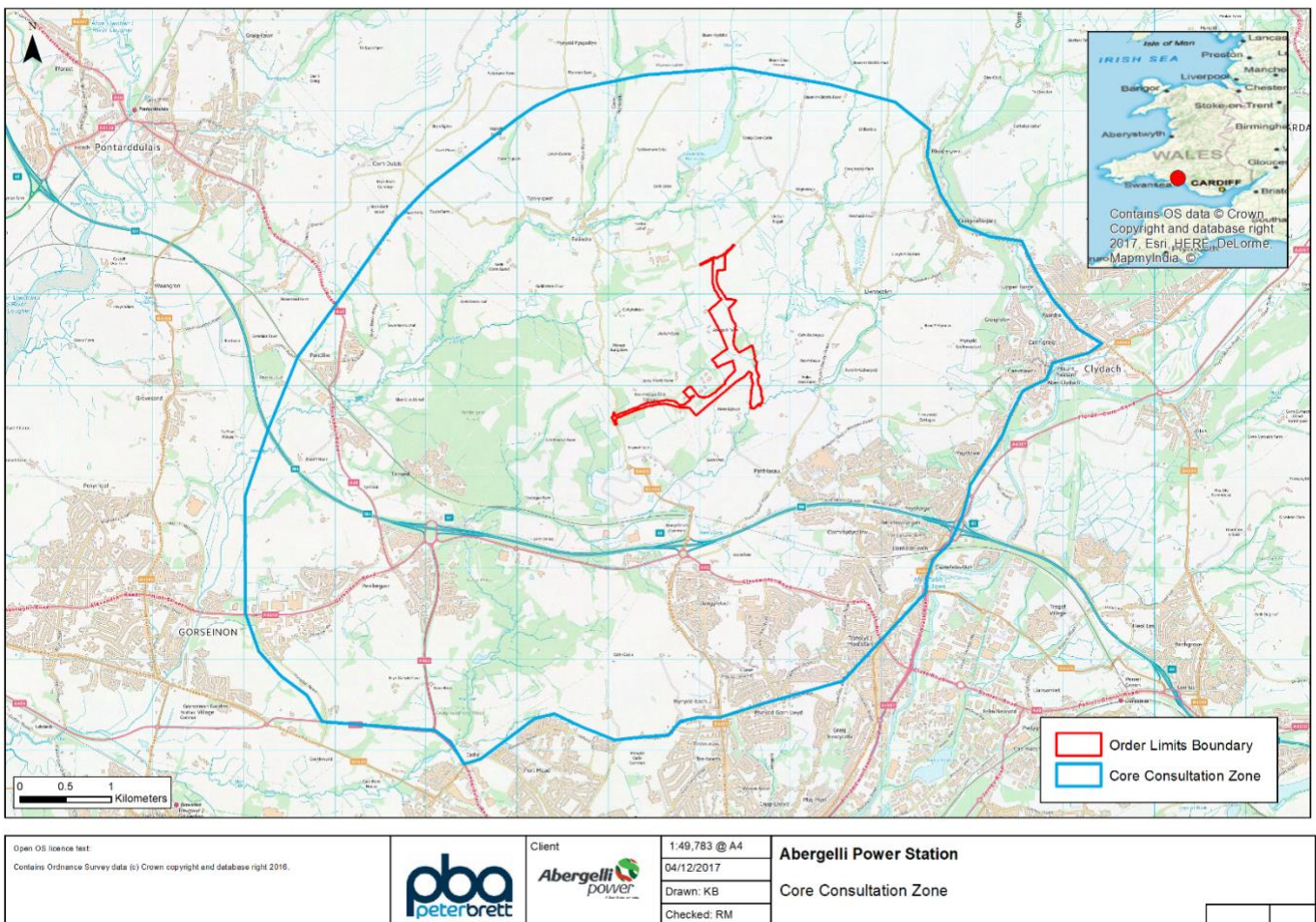
b. *Who will we consult with?*

The Planning Act 2008 (as amended) states that those '*living in the vicinity of the land*' should be consulted. APL has discussed the scope of the consultation with City & County of Swansea (CCS) as the local planning authority, and has identified and agreed the Consultation Zones that form the basis of the community consultation.

APL will carry out its consultation activities in two areas: a Core Consultation Zone (CCZ) that equates to an approximate radius of 3.5km from the Project Site and an Outer Consultation Zone (OCZ) that equates to a radius of approximately 8km. These consultation zones are the same as

those used by APL during 2014 consultation.

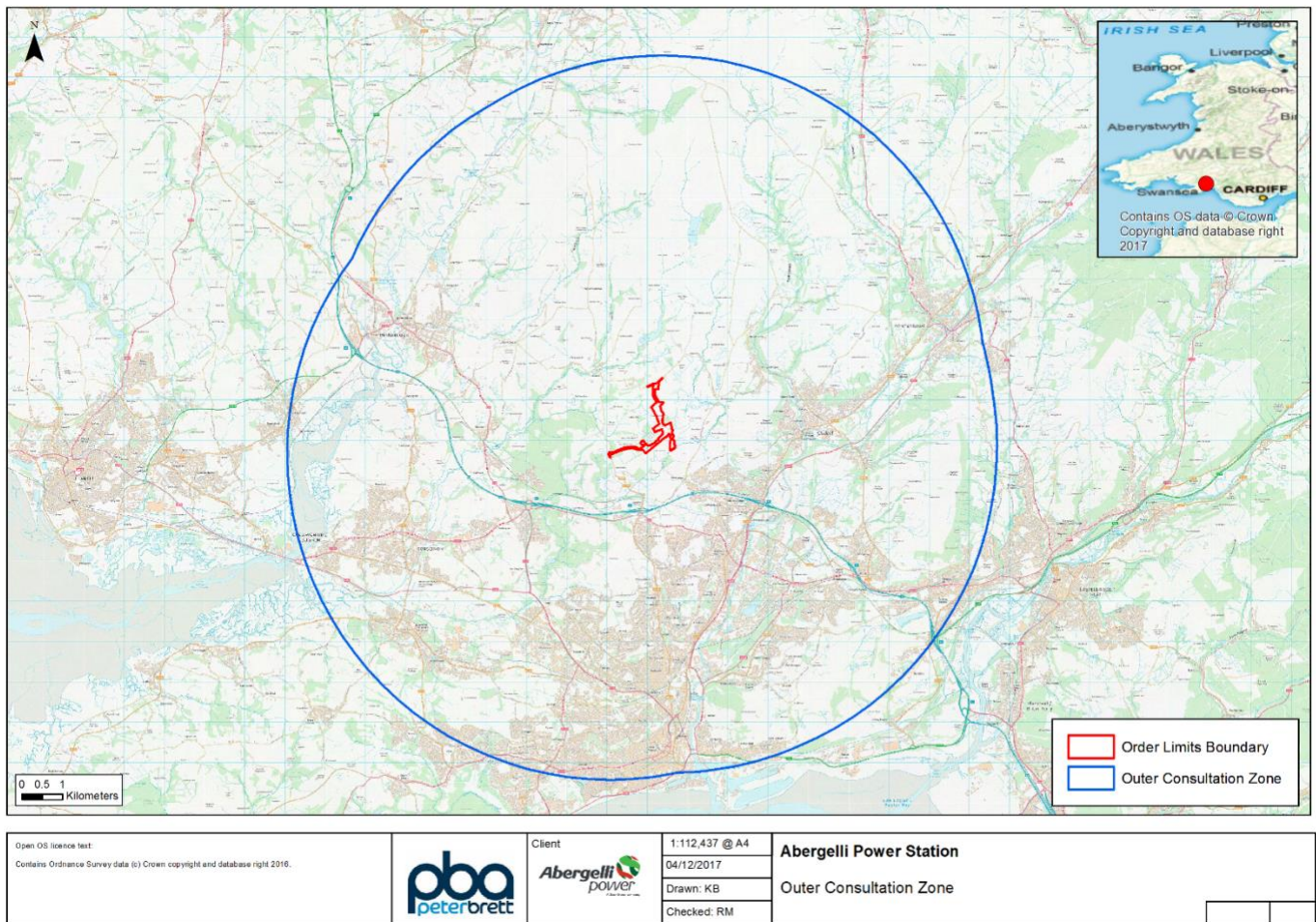
The CCZ has been designed to include the main population areas in the vicinity of the Project Site (located in the CCS ward of Mawr) that have the potential to be affected by the Project and expected to have the greatest interest in the Project. The zone includes the villages of Clydach, Felindre, Llangyfelach and Tircoed, and all or parts of the following communities/ community council areas: Clydach, Llangyfelach, Mawr, Morryston, Mynyddbach, Penllergaer, Penderry, Llwhchr, Grovesend & Waungron and Pontlliw & Tircoed. An information leaflet will be sent to households, businesses and institutions in the CCZ and the CCZ will be the focus of public exhibitions (see below).



Proposed Core Consultation Zone – approx. 3.5 km radius from the Project Site

Communities within the OCZ will be informed about the Project (via newspaper advertisements, posters, media coverage and contact with local elected members and community councils in the OCZ and other relevant local organisations) and given the opportunity to comment on the plans.

The outer zone includes the main population area of the city of Swansea.



Proposed Outer Consultation Zone – approx. 8 km radius from the Project Site

APL does not anticipate that the communities and businesses which lie within the OCZ will be significantly impacted by the Project’s construction and operation although APL recognises that they may be interested in it. Those outside the two zones will be informed about the project via the Swansea-based South Wales Evening Post for two weeks prior to the first event taking place as well as via local and regional news publications, local radio and TV stations (and via online media) and social media. The newspaper advertisements (and media coverage), will reach those outside the CCZ and OCZ as well as those within the CCZ and OCZ themselves. Feedback that is received within the consultation period will be considered. The content will give information on APL’s proposals and details of the consultation events, including contact information.

c. How will we consult?

APL will seek and receive people’s views through a number of activities:

- Public exhibitions will be held at Clydach, Felindre, Llangyfelach and Tircoed within the CCZ. In line with the statutory consultation process undertaken in 2014 (and feedback received), these continue to be considered the most convenient locations to those communities within the CCZ that surround the Project Site. APL will arrange for them to be held at convenient times including an event to be held on a Saturday for those unable to visit during the working week. APL will use venues that meet Equality Act 2010 requirements and upon a reasonable and timely request will make provision for those with special requirements who are unable to attend or access a consultation event (for example, private transport to a consultation event).
- The public exhibitions will feature relevant information in a variety of formats (display panels, plans, leaflet etc.) about the Project, in both English and Welsh. The 2018 PEIR, reviewed and updated from 2014 consultation, will also be made available for review. Members of the APL project team will be available to discuss the Project, answer questions and to receive feedback from members of the public. Feedback forms in English and Welsh, allowing people to provide their views on the Project, will be available at these exhibitions;
- A leaflet will be delivered to households, businesses and institutions in the CCZ at least one week in advance of the first consultation event, informing them of the consultation events taking place, and made available at local council offices, local libraries and other venues as appropriate. The leaflet will also be distributed to those groups that are defined as “hard to reach” (for example, the elderly, the young and minority groups). It will give background on the Project, the consultation process (including exhibitions) and how individuals can engage in it. The leaflet will be made available at libraries and council offices in the OCZ. This leaflet will be produced in both English and Welsh.
- During the statutory consultation period APL will engage with elected members of City and County of Swansea Council, community councils, the local MP and AMs whose constituency covers the CCZ, to discuss the Project.
- The following information will be available at the locations below:
 - Hard copies of the SoCC, the leaflet, the 2018 PEIR and 2018 NTS; and
 - Electronic copies of the Welsh language 2018 NTS, No Significant Effects Report and technical appendices to the 2018 PEIR.

	Swansea Central Library Civic Centre Oystermouth Road Swansea SA1 3SN (01792) 636464	Clydach Library High Street Clydach, Swansea SA6 5LN (01792) 843300	Gorseinon Library 15 West Street Gorseinon Swansea SA4 4AA (01792) 516780	Morrleston Library Treharne Road Morrleston Swansea SA6 7AA (01792) 516770	Pontarddulais Library St Michael's Avenue Pontarddulais Swansea SA4 8TE (01792) 882822
Monday	CLOSED	9.30-17.30	9.00-18.00	9.00-18.00	9.00- 13.00 and 14.00 - 17.00
Tuesday	8.30-20.00	9.30-17.30	9.00-18.00	9.00-18.00	9.00- 13.00 and 14.00 - 17.00
Wednesday	8.30-20.00	9.30-17.30	9.00-18.00	9.00-18.00	9.00- 13.00 and 14.00 - 17.00
Thursday	8.30-20.00	9.30-17.30	9.00-18.00	9.00-18.00	9.00- 13.00 and 14.00 - 17.00
Friday	8.30-20.00	9.30-18.30	9.00-19.00	9.00-18.00	9.00- 13.00 and 14.00 - 18.00
Saturday	10.00-16.00	9.30-16.30	9.00-17.00	9.00-17.00	9.00- 13.00
Sunday	10.00-16.00	CLOSED	CLOSED	CLOSED	CLOSED

- The leaflet and other information about the Project can be made available in other formats (e.g. large print or braille) and the Welsh language upon reasonable request;
- A website (www.abergellipower.co.uk) provides information on the Project as well as access to documents, and provide visitors the opportunity to ask questions or make comments online;
- An e-mail address to which individuals can write (provided at the end of this document);
- A Freepost mailbox to which people can send questions or comments (provided at the end of this document);
- APL will also notify the local community about the Project and the consultation events via posters in the local community, newspaper advertisements and media coverage;
- In addition, APL will contact a broad spectrum of local stakeholders. These will include elected representatives, local community, special interest groups (including those “*hard to reach groups*” such as the young, elderly and the disabled), and local business groups. APL will provide them with information on the Project and undertake briefings where appropriate.

Comments and queries via telephone (as well as via post, email or fax) will be considered and addressed within the scheme where possible, as well as comments noted. Comments will be accepted for a period of 35 days following the launch of the statutory period of consultation.

Individuals and organisations wishing to respond should include their name and an address where correspondence about the response can be sent. Responses may be made public, subject to data protection laws.

Comments made at any stage of the consultation process will be recorded and carefully considered by APL as part of the process of preparing the final proposals for its application to the Planning Inspectorate. The Consultation Report, which will accompany the DCO application, will detail the consultation activities, the feedback received and APL's response to the issues that are raised during the process.

KEY DATES	ACTIVITY
2nd January 2018	Statement of Community Consultation published
16th January 2018	Consultation period starts
PUBLIC EXHIBITIONS	
7th February 2018 16.00 – 19.00	Llangyfelach Church Hall , Swansea Road, Llangyfelach, Swansea SA5 7JA
8th February 2018 15.30 – 18.30	Forge Fach Resource Centre , Hebron Road, Clydach, Swansea SA6 5EJ
9th February 2018 17.00 – 20.00	Tircoed Village Hall , Y Cyswllt, Tircoed SA4 9QZ
10th February 2018 10.00 – 13.00	Felindre Welfare Hall , Felindre, Swansea SA5 7NA
19th February 2018	Consultation period closes
Q2 2018	DCO Application submitted
Q2 2018	Planning Inspectorate publicly notifies the acceptance of application and sets examination timetable, likely to run during Q3 2018.

Contact details

APL welcomes queries and comments:

Website: www.abergellipower.co.uk

Email: info@abergellipower.co.uk

Post: Freepost ABERGELLI POWER

Phone: 01792 957 026

GLOSSARY OF ACRONYMS

Acronym	Term
2018 PEIR	2018 Preliminary Environmental Information Report
2018 NTS	2018 Non-technical Summary
AM	Assembly Member
APL	Abergelli Power Limited
CCZ	Core Consultation Zone
DCO	Development Consent Order
EIA	Environmental Impact Assessment
NPS	National Policy Statement
NSIP	Nationally Significant Infrastructure Project
NRW	Natural Resources Wales
MP	Member of Parliament
OCZ	Outer Consultation Zone
SoCC	Statement of Community Consultation