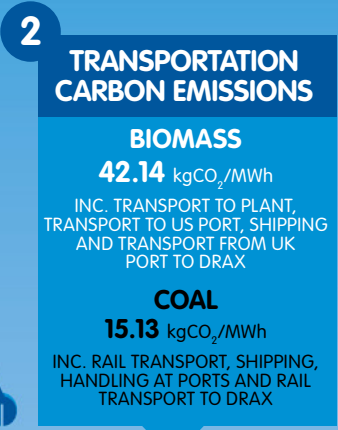
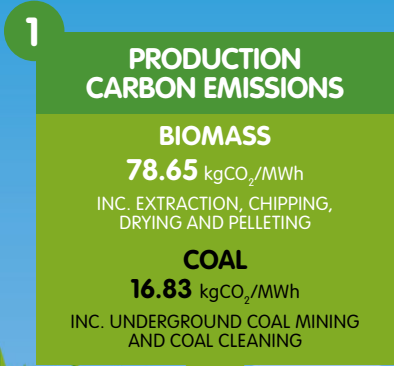
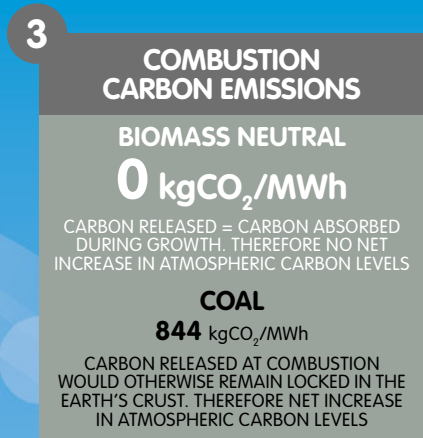
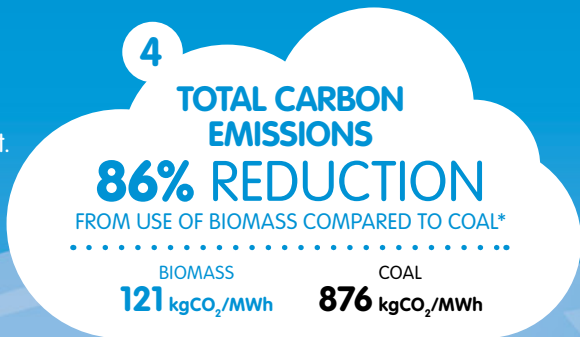


The biomass story



Sustainably sourced biomass is a low carbon, cost effective and renewable power resource, set to play an increasing role in Europe's sustainable energy mix. There are still carbon emissions within the biomass supply chain, but compared to coal the savings are significant.

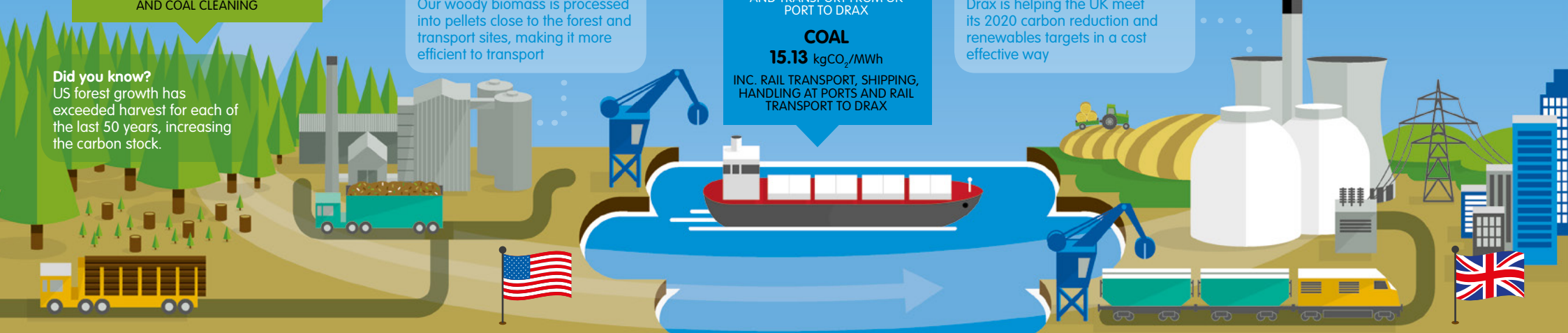
This infographic tells the biomass story through its carbon cycle, highlighting emissions and savings along the way.



Did you know?
Our woody biomass is processed into pellets close to the forest and transport sites, making it more efficient to transport

Did you know?
Drax is helping the UK meet its 2020 carbon reduction and renewables targets in a cost effective way

Did you know?
US forest growth has exceeded harvest for each of the last 50 years, increasing the carbon stock.



- We only buy forestry material from sustainably managed forests
- The forests we buy from provide socio-economic benefits to the rural communities where they operate

- We audit our biomass suppliers according to robust sustainability criteria – we are leaders in the Forest Footprint Disclosure scheme
- The biomass we use typically comes from low-value wood such as thinnings, small branches and diseased or misshapen trees that cannot be used for higher value purposes, such as furniture

Comprehensive lifecycle analysis has shown much less CO₂ is emitted by biomass compared to coal, even when imported

- Electricity generation from biomass is flexible and reliable, able to respond quickly to changes in demand
- Our electricity supply company Haven Power, can supply low carbon, renewable electricity to its business customers, helping them to meet their sustainability commitments

*the figures are illustrative and based on biomass and coal purchased in the US. We have based our calculations on the following:

Biomass:

- Is made up of 80% thinnings and 20% forest residues
- Carbon emissions are calculated using Ofgem's solid biomass and biogas carbon calculator
- Biomass is shipped in large (supramax) vessels

Coal:

- Is mined underground
- Is shipped from the USA to UK