



## The Abergelli Power Gas Fired Generating Station Order

### 5.2 Consultation Report Appendices – Volume B Appendices 4.E.III – 4.E.VII

Planning Act 2008  
The Infrastructure Planning  
(Applications: Prescribed Forms and Procedure) Regulations 2009

**PINS Reference Number:** EN010069  
**Document Reference:** 5.2  
**Regulation Number:** 5(2)(q) & s37(3)(c) Planning Act 2008  
**Author:** Peter Brett Associates LLP

Revision	Date	Description
0	May 2018	Submission Version





## Consultation Report Appendices – Volume B

### Appendix 4: Phase 1 Statutory Consultation

#### 4.E Phase 1 S47 Statutory Consultation: Exhibition Materials

- III Leaflet available at statutory exhibitions (English/Welsh)
- IV Feedback form available at statutory exhibitions (English)
- V Feedback form available at statutory exhibitions (Welsh)
- VI Additional plans and materials available at statutory exhibitions
- VII Photographs of statutory exhibitions at Llangyfelach (22nd October 2014), Felindre (23rd October 2014), Clydach (24th October 2014) and Tircoed (25th October 2014)

## **Appendix 4.E: Phase 1 S47 Statutory Consultation: Exhibition Materials**

**4.E III** [Leaflet available at statutory exhibitions \(English/Welsh\)](#)



Proposal to build a  
gas-fired power station  
by Abergelli Power

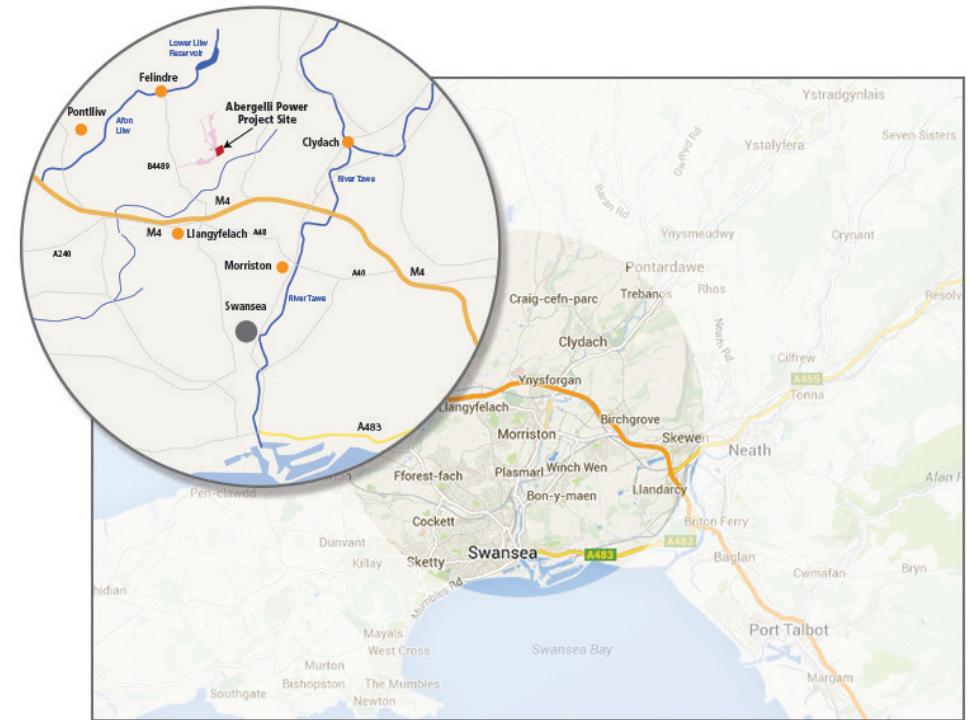
Cynigiad i adeiladu gorsaf  
bŵer sy'n rhedeg ar nwy  
gan Abergelli Power

The objectives of this public consultation are to provide a better understanding of the Abergelli Power Project and to give the local community the opportunity to have a say on the proposal.

Amcanion yr ymgynghoriad cyhoeddus hwn yw darparu gwell dealltwriaeth o Brosiect Abergelli Power a rhoi'r cyfle i'r gymuned leol gael dweud ei dweud am y cynigiad.

## The Project

## Y Prosiect



Abergelli Power Limited (APL) proposes to develop a gas-fired electricity generation project on land adjacent to the National Grid gas compressor station at Abergelli Farm, Felindre, Swansea. The Project includes a power generation plant and its electrical and gas connections. The Project would have a rated electrical output of up to 299MW.

Mae Abergelli Power Cyfyngedig (APL) yn cynnig datblygu prosiect cynhyrchu trydan sy'n rhedeg ar nwy ar dir gerllaw gorsaf gywasgu nwy'r Grid Cenedlaethol ar Fferm Abergelli, Felindre, Abertawe. Mae'r Prosiect yn cynnwys gwaith cynhyrchu pŵer a'i gysylltiadau trydanol a nwy. Byddai gan y Prosiect gyfradd allbwn trydanol o hyd at 299 megawat.

## Who is Abergelli Power?

APL has been established by Watt Power Limited to develop the Project. Watt Power is seeking to develop electricity generation projects at Abergelli Farm and elsewhere in south Wales and the UK to support the UK Government's drive to a low carbon economy.

Further information about APL and the Project can be found on the Abergelli Power website <http://www.abergellipower.co.uk>.

## Pwy yw Abergelli Power?

Mae APL wedi'i sefydlu gan Watt Power Limited i ddatblygu'r Prosiect. Mae Watt Power yn ceisio datblygu prosiectau cynhyrchu trydan ar Fferm Abergelli ac mewn mannau eraill yn Ne Cymru ac yn y Deyrnas Unedig i gefnogi ymgyrch Llywodraeth y DU i gael economi carbon isel.

Gellir canfod rhagor o wybodaeth am APL ac am y Prosiect ar wefan Abergelli Power <http://www.abergellipower.co.uk>.

## Planning and public consultation

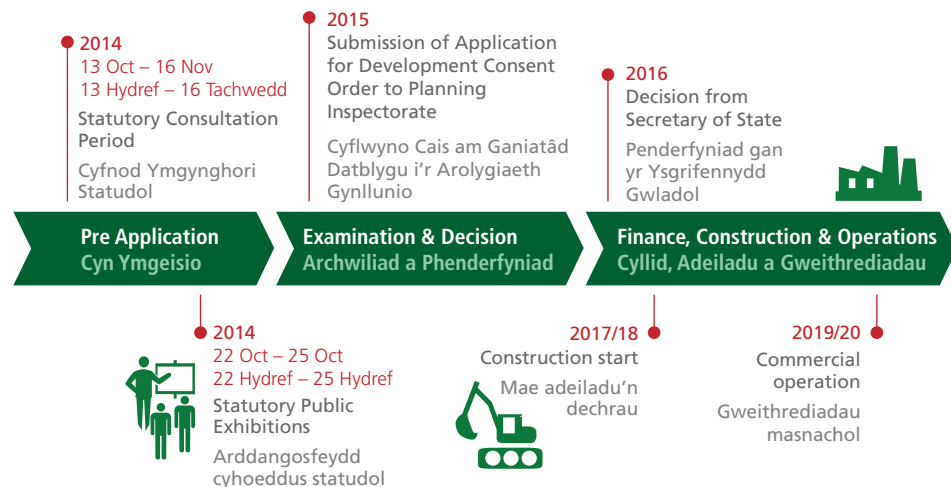
The Project is classified as a Nationally Significant Infrastructure Project, which means that a Development Consent Order (DCO) is required to build, operate and maintain it. The DCO Application will be examined by the Planning Inspectorate who will make a recommendation to the Secretary of State for Energy and Climate Change (Secretary of State). The final decision on the Application will be made by the Secretary of State.

The figure below provides an overview of the DCO Application Process, as well as the current position of the Project in this process. Further information about the DCO Application Process is available on the Planning Inspectorate's website (<http://infrastructure.planningportal.gov.uk>).

Consultation with local people, businesses, and organisations is an essential part of the DCO Application Process and will help to inform the final design of the Project.

This leaflet describes the Project and the statutory consultation period which is taking place over a 35-day period from 13 October 2014 to 16 November 2014. APL would like to invite your views on the project – the 'Get in Touch' section of this leaflet describes how you can provide your views.

## Key Milestones



## Cynllunio ac ymgynghori â'r cyhoedd

Caiff y Prosiect ei gategoreiddio fel Prosiect Seilwaith Cenedlaethol ei Arwyddocâd, sy'n golygu bod angen Gorchymyn Caniatâd Datblygu (DCO) i'w adeiladu, i'w weithredu ac i'w gynnal. Archwilir y Cais am Orchymyn Caniatâd Datblygu gan yr Arolygiaeth Gynllunio fydd yn gwneud argymheliad i'r Ysgrifennydd Gwladol dros Ynni a Newid Hinsawdd (Ysgrifennydd Gwladol). Gwneir y penderfyniad terfynol ar y Cais gan yr Ysgrifennydd Gwladol.

Mae'r ffigwr isod yn darparu trosolwg ar y Broses Ymgeisio am Orchymyn Caniatâd Datblygu, yn ogystal â sefyllfa gyfredol y Prosiect yn y broses hon. Mae rhagor o wybodaeth am y Broses Ymgeisio am Orchymyn Caniatâd Datblygu ar gael ar wefan yr Arolygiaeth Gynllunio (<http://infrastructure.planningportal.gov.uk>).

Mae ymgynghori â phobl, busnesau a sefydliadau lleol yn rhan hanfodol o'r Broses Ymgeisio am Orchymyn Caniatâd Datblygu a bydd yn helpu i oleuo dyluniad terfynol y Prosiect.

Mae'r daflen hon yn disgrifio'r Prosiect a'r cyfnod ymgynghori statudol sy'n digwydd dros gyfnod o 35 diwrnod o'r 13eg o Hydref, 2014 tan yr 16eg o Dachwedd, 2014. Hoffai APL eich gwahodd i rannu'ch barn am y prosiect – mae adran 'Cysylltwch â Ni' y daflen hon yn disgrifio sut y gallwch roi'ch barn.

## Cerrig Milltir Allweddol



This visual is based on a power generation plant including five gas turbine generators. If fewer units are required, they may be larger (but the stack height will not increase). Additional visuals will be available at the public exhibitions and in other consultation materials.

Mae'r ddelwedd weledol hon wedi'i seilio ar waith cynhyrchu pŵer yn cynnwys pum generadur tyrbîn nwy. Os bydd angen llai o unedau, gallant fod yn fwy (ond ni fydd uchder y simnai'n cynyddu). Bydd delweddau ychwanegol ar gael yn yr arddangosfeydd cyhoeddus ac mewn deunyddiau ymgynghori eraill.

## Key details of the Project

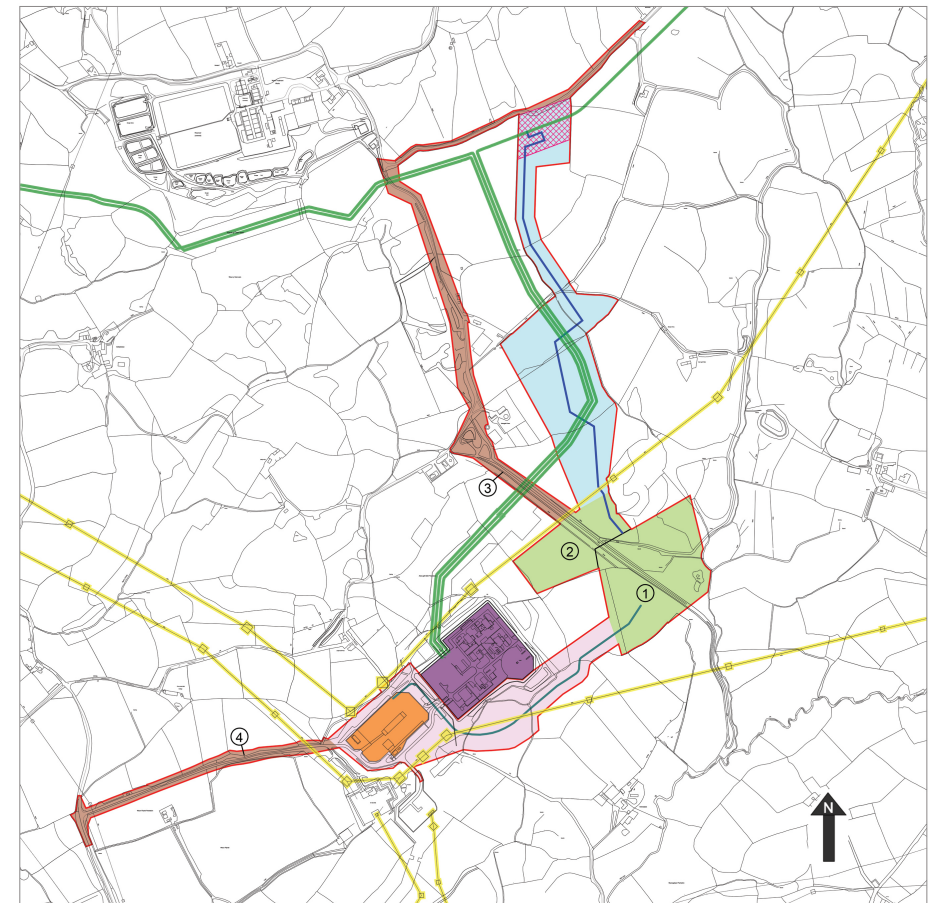
The key details of the Project are:

- The construction, operation and maintenance of a simple cycle gas turbine power generation plant with a rated electrical output of up to 299MW;
- The site for the power generation plant covers an area of approximately 6ha and is located on land adjacent to the National Grid gas compressor station at Abergelli Farm, Felindre, Swansea;
- The power generation plant will have up to 5 stacks, each up to 40m in height;
- The power generation plant will produce electricity from natural gas;
- The construction of a new underground pipeline to bring natural gas to the power generation plant from the existing National Gas Transmission System located nearby;
- The construction of a new underground electrical connection to export electricity from the power generation plant to the existing Swansea North electricity substation located nearby;
- The route for accessing the Project site is yet to be finalised. Two possible options are being evaluated. The first option is to extend the existing road to National Grid's Swansea North substation, which is accessed via the B4489 to the west of the power generation plant site. The alternative option is to use the existing road to Abergelli Farm via Rhyd-y-Pandy Road, giving access to the site from the north;
- The power generation plant is designed to provide back-up generation capacity which can operate flexibly to respond quickly and efficiently to both short-term variation in customer demand and intermittent output from renewable power generation. It is anticipated that it will operate for no more than 1500 hours per year; and
- Subject to public consultation, planning and financing, the Project could enter commercial operation in 2020.










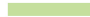






## Manylion allweddol y Prosiect

Manylion allweddol y Prosiect yw:

- Adeiladu, gweithredu a chynnal a chadw gwaith cynhyrchu pŵer tyrbîn nwy cylch syml sydd â chyfradd allbwn trydanol o hyd at 299 megawatt;
- Mae'r safle ar gyfer y gwaith cynhyrchu pŵer yn ymestyn dros ardal sydd oddeutu 6 hectar ac fe'i lleolir ar dir gerllaw gorsaf gywasgu nwy'r Grid Cenedlaethol ar Fferm Abergelli, Felindre, Abertawe;
- Bydd gan y gwaith cynhyrchu pŵer hyd at 5 simnai, a bydd pob un hyd at 40 metr o uchder;
- Bydd y gwaith cynhyrchu pŵer yn cynhyrchu trydan o nwy naturiol;
- Adeiladu piblinell danddaearol newydd i ddod â nwy naturiol i'r gwaith cynhyrchu pŵer o'r System Trawsyrro Nwy Genedlaethol bresennol a leolir gerllaw;
- Adeiladu cysylltiad trydanol tanddaearol newydd i drosglwyddo trydan o'r gwaith cynhyrchu pŵer i is-orsaf drydan bresennol Gogledd Abertawe a leolir gerllaw;
- Mae'r llwybr ar gyfer mynediad i safle'r Prosiect eto i'w bennu'n derfynol. Mae dau opsiwn posibl yn cael eu gwerthuso. Yr opsiwn cyntaf yw ymestyn y ffordd bresennol i is-orsaf Gogledd Abertawe y Grid Cenedlaethol, yr eir ati ar hyd ffordd y B4489 i'r gorllewin o safle'r gwaith cynhyrchu pŵer. Yr opsiwn arall yw defnyddio'r ffordd bresennol i Fferm Abergelli drwy Heol Rhyd-y-Pandy, gan roi mynediad i'r safle o'r gogledd;
- Mae'r gwaith cynhyrchu pŵer wedi'i ddylunio i ddarparu capasiti cynhyrchu wrth gefn a all weithredu'n hyblyg i ymateb yn gyflym ac yn effeithlon i amrywiad byrdymor yn y galw gan gwsmeriaid ac allbwn ysbeidiol a ddaw o gynhyrchu pŵer adnewyddadwy. Rhagwelir na fydd yn weithredol am fwy na 1500 o oriau'r flwyddyn; ac
- Yn amodol ar ymgynghori â'r cyhoedd, cynllunio ac ariannu, gall y Prosiect ddechrau gweithredu'n fasnachol yn 2020.



Legend:

	Proposed Redline Boundary (Incorporating Alternative Options)		Generating Equipment Site
	Gas Connection Route Corridor		Laydown Area
	Electrical Connection Route Corridor and Access Road Corridor		Access Road Corridor - Option 1
	Access Road Corridor Only		Access Road Corridor - Option 2
	Generating Equipment Site and Laydown Area		
	Existing Gas Compressor Station		
	Existing Swansea North Electricity Substation		
	Indicative AGI Location		
	400kV Overhead Electricity Transmission Lines		
	National Gas Transmission System		
	Indicative Electrical Connection Route		
	Indicative Gas Connection Route		

Indicative plan showing the main elements of the Project. The red line boundary marks the boundary of the Project site, and includes all land necessary to carry out the Project.

Cynllun dangosol sy'n dangos prif elfennau'r Prosiect. Mae'r terfyn sydd â llinell goch yn nodi terfyn safle'r Prosiect, ac mae'n cynnwys yr holl dir sy'n angenrheidiol i gwblhau'r Prosiect.



## Why Abergelli Farm?

The site at Abergelli Farm has two key advantages:

- The site is close to the national gas and electricity transmission networks; and
- National Grid encourages new electricity generation development in south Wales, close to the main sources of electrical demand in the UK.

## The need for gas generation

The Government's Overarching National Policy Statement for Energy states that "...gas will continue to play an important role in the electricity sector – providing vital flexibility to support an increasing amount of low-carbon generation and to maintain security of supply."

The Welsh Government's publication 'Energy Wales: A Low Carbon Transition' states that "...in the short term, gas, nuclear and bio-energy will provide the energy to compensate for the intermittency in supply from renewable resources."

Gas is a reliable fuel source and is acknowledged by both the UK and Welsh Governments as being essential to support a low carbon economy. In addition, gas can provide back-up to power generation from renewable sources, particularly wind power – which is an increasingly prevalent but intermittent energy source. Modern gas-fired power plants are among the most efficient and cleanest forms of electricity power generation. The need for the Project is established through the Government's National Policy Statements and is not a topic for consultation.

## Development of the Project

APL first shared its initial plans for the Project at public exhibitions in June 2014. Since this period of non-statutory consultation, APL has responded to and acted upon comments on its plans.

Several significant changes have occurred since the period of non-statutory consultation in June, including:

- A reduction in the maximum height of the stacks from 60m to 40m;
- A narrowing of the gas connection opportunity area to one route corridor with an indicative gas connection route; and

- A narrowing of the electrical connection opportunity area to one route corridor with an indicative electrical connection route.

Detailed technical and environmental studies as well as refinements to the design of the Project are ongoing. APL is engaging with bodies such as the City & County of Swansea (CCS), Natural Resources Wales (NRW) and local AMs and MPs to ensure that the Project is designed, built, operated and maintained to the highest relevant and current safety and environmental standards.

For the purpose of consultation, APL has prepared a Preliminary Environmental Information Report (PEIR) for the Project and a non-technical summary of the PEIR. These documents can be viewed on the Abergelli Power website ([www.abergellipower.co.uk](http://www.abergellipower.co.uk)) from 13 October 2014.

The documents are also available for viewing free of charge from 13 October 2014 until 16 November 2014 at the following libraries (opening times vary):

### Swansea Central Library

Civic Centre, Oystermouth Road, Swansea SA1 3SN, 01792 636464. Tue-Fri; 8.30-20.00. Sat-Sun; 10.00-16.00.

### Clydach Library

High Street, Clydach, Swansea SA6 5LN. 01792 843300 Mon-Sat; 9.30-17.30.

### Gorseinon Library

15 West Street, Gorseinon, Swansea SA4 4AA, 01792 516780. Mon-Thurs; 9.00-18.00. Fri; 9.00-19.00. Sat; 9.00-17.00.

### Morrison Library

Treharne Road, Morrison, Swansea SA6 7AA. 01792 516770. Mon-Fri; 9.00-18.00. Sat; 9.00-17.00.

### Pontarddulais Library

St Michael's Avenue, Pontarddulais, Swansea SA4 8TE. 01792 882822. Mon-Thu; 9.00-13.00 and 14.00-17.00. Fri; 9.00-13.00 and 14.00-18.00. Sat; 10.00- 13.00.

The documents are also available for viewing free of charge at the office of City & County of Swansea Council, Penllergaer, Swansea SA4 9GJ (01792 636000) from 13 October 2014 until 16 November 2014 between 8.30–17.00 Monday – Thursday and 8.30 – 16.30 Friday.

## Pam Fferm Abergelli?

Mae gan y safle ar Fferm Abergelli ddwy fantais allweddol:

- Mae'r safle'n agos at y rhwydweithiau trawsyrru nwy a thrydan cenedlaethol;
- Mae'r Grid Cenedlaethol yn annog datblygiad cynhyrchu trydan newydd yn Ne Cymru, yn agos at brif ffynonellau'r galw am drydan yn y Deyrnas Unedig.

## Yr angen i gynhyrchu nwy

Mae Datganiad Polisi Cenedlaethol Troswfaol y Llywodraeth ar gyfer Ynni yn datgan "...y bydd nwy'n parhau i fod â rôl bwysig yn y sector trydan – gan ddarparu hyblygrwydd hanfodol i ategu cyfaint cynyddol o gynhyrchu carbon isel ac i gynnal sicrwydd y cyflenwad."

Mae'r ddogfen a gyhoeddwyd gan Lywodraeth Cymru, 'Ynni Cymru: Newid Carbon Isel', yn datgan mai "...yn y byrdymor, bydd nwy, niwclear a bio-ynni'n darparu'r ynni i wneud iawn am yr ysbeidioldeb o ran cyflenwi oddi wrth adnoddau adnewyddadwy."

Mae nwy'n ffynhonnell danwydd sy'n ddibynadwy ac fe'i cydnabyddir gan Lywodraethau'r Deyrnas Unedig a Chymru, fel ei gilydd, fel ffynhonnell hanfodol i gynnal economi carbon isel. Yn ychwanegol, gall nwy ddarparu pŵer wrth gefn i'r pŵer a gynhyrchir o ffynonellau adnewyddadwy, yn enwedig pŵer gwynt - sy'n ffynhonnell ynni cynyddol gyffredin ond ysbeidiol. Mae gweithfeydd pŵer modern sy'n rhedeg ar nwy ymysg y mathau mwyaf effeithlon a glanaf o weithfeydd cynhyrchu pŵer trydan. Mae'r angen am y Prosiect wedi'i gadarnhau trwy Ddatganiadau Polisi Cenedlaethol y Llywodraeth ac nid yw'n bwnc ar gyfer ymgynghori.

## Datblygu'r Prosiect

Rhannodd APL eu cynlluniau cychwynnol ar gyfer y Prosiect am y tro cyntaf mewn arddangosfeydd cyhoeddus ym mis Mehefin, 2014. Ers y cyfnod hwn o ymgynghori anstatudol, mae APL wedi ymateb i ac wedi gweithredu ar sylwadau ynghylch eu cynlluniau.

Mae yna amryw o newidiadau arwyddocaol wedi digwydd ers y cyfnod o ymgynghori anstatudol ym mis Mehefin, gan gynnwys:

- Gostyngiad yn uchder mwyaf y simneiau o 60 metr i 40 metr;
- Culhau ardal gyfle'r cysylltiad nwy i un coridor

llwybr gyda llwybr cysylltiad nwy dangosol; a

- Culhau coridor llwybr y cysylltiad trydanol gyda llwybr cysylltiad trydanol dangosol.

Mae astudiaethau technegol ac amgylcheddol manwl, yn ogystal â gorffeniadau yn nyluniau y Prosiect, yn mynd rhagddynt. Mae APL yn ymgysylltu â chyfrff fel Cyngor Dinas a Sir Abertawe, Cyfoeth Naturiol Cymru (NRW) ac Aelodau lleol y Cynulliad ac Aelodau Seneddol lleol i sicrhau bod y Prosiect yn cael ei ddylunio, ei adeiladu, ei weithredu a'i gynnal hyd at y safonau diogelwch ac amgylcheddol perthnasol a chyfredol uchaf.

Er diben ymgynghori, mae APL wedi paratoi Adroddiad Gwybodaeth Amgylcheddol Rhagarweiniol (PEIR) ar gyfer y Prosiect a chrynodeb annhechnegol o'r PEIR. Gellir gweld y dogfennau hyn ar wefan Abergelli Power ([www.abergellipower.co.uk](http://www.abergellipower.co.uk)) o'r 13eg o Hydref, 2014.

Mae'r dogfennau hefyd ar gael i'w gweld yn ddi-dâl o'r 13eg o Hydref, 2014 tan yr 16eg o Dachwedd, 2014 yn y llyfrgelloedd a ganlyn (mae amseroedd agor yn amrywio):

### Llyfrgell Ganolog Abertawe

Y Ganolfan Ddinesig, Heol Ystumllwynarth, Abertawe SA1 3SN. 01792 636464. Mawrth-Gwener; 8.30-20.00. Sadwrn-Sul; 10.00-16.00

### Llyfrgell Clydach

Stryd Fawr, Clydach, Abertawe SA6 5LN. 01792 843300 Llun-Sadwrn; 9.30-17.30

### Llyfrgell Gorseinon

15 Stryd y Gorllewin, Gorseinon, Abertawe SA4 4AA. 01792 516780. Llun-lau; 9.00-18.00. Gwener; 9.00-19.00. Sadwrn; 9.00-17.00.

### Llyfrgell Treforys

Heol Treharne, Treforys, Abertawe SA6 7AA. Llun-lau; 9.00-13.00 a 14.00-17.00. Gwener; 9.00-13.00 a 14.00-18.00. Sadwrn; 10.00-13.00.

### Llyfrgell Pontarddulais

Rhodfa St Michael, Pontarddulais, Abertawe SA4 8TE. 01792 882822. Llun-lau; 9.00-13.00 a 14.00-17.00. Gwener; 9.00-13.00 a 14.00-18.00. Sadwrn; 9.00- 13.00.

Mae'r dogfennau hefyd ar gael i'w gweld yn ddi-dâl yn swyddfa Cyngor Dinas a Sir Abertawe, Penllergaer, Abertawe SA4 9GJ (Ffôn 01792 636000) o'r 13eg o Hydref, 2014 tan yr 16eg o Dachwedd, 2014 rhwng 8.30–17.00 dydd Llun – dydd lau, a 8.30 – 16.30 dydd Gwener.

## Environment

APL's steps to mitigate the impact of the Project on the local environment during its construction, operation and maintenance are a major part of the consultation and planning process.

Due to the nature and size of the Project, it is classified as Environmental Impact Assessment (EIA) development and so APL is undertaking an EIA which considers the potential impacts of the Project. APL has published its preliminary EIA findings in the PEIR. These findings indicate the following key potential impacts, all of which will be mitigated through the final design process:

- Transport – impact to the local network from construction traffic confined to the construction and decommissioning periods;
- Air quality and emissions – resulting from construction activities and during operation of the power generation plant;
- Noise – potential increase in background noise during construction and operation within the vicinity of the site;
- Visual impact and effects on cultural heritage setting – introduction of up to five stacks up to 40m in height into the local landscape; and
- Local ecology – no anticipated negative impacts, but opportunity to improve local habitat through additional planting.

## Community benefits

This £200m Project would be a substantial investment in the area and would deliver significant economic benefits for a period of at least 25 years, including:

- Creation of up to 150 jobs during a 2-year construction period;
- Creation of up to 15 permanent skilled jobs for ongoing operation and maintenance of the facility; and
- Potential business opportunities for local suppliers.

## Yr Amgylchedd

Mae camau APL i liniaru effaith y Prosiect ar yr amgylchedd lleol yn ystod ei adeiladu, ei weithredu a'i gynnal yn rhan sylweddol o'r broses ymgynghori a chynllunio.

Oherwydd natur a maint y Prosiect, fe'i categoreddidd fel datblygiad Asesiad o'r Effaith Amgylcheddol (EIA) ac felly mae APL yn cynnal Asesiad o'r Effaith Amgylcheddol, sy'n ystyried effeithiau posib' y Prosiect. Cyhoeddodd APL eu canfyddiadau rhagarweiniol o'r Asesiad o'r Effaith Amgylcheddol yn y PEIR. Mae'r canfyddiadau hyn yn dynodi'r effeithiau posib' allweddol a ganlyn, y byddant i gyd yn cael eu lliniaru trwy'r broses ddylunio derfynol:

- Trafnidiaeth – cyfyngir ar yr effaith ar y rhwydwaith lleol gan draffig adeiladu i'r cyfnodau adeiladu a datgomisiynu;
- Ansawdd yr aer ac allyriadau – yn deillio o weithgareddau adeiladu ac yn ystod gweithredu'r gwaith cynhyrchu pŵer;
- Sŵn – cynnydd posib' mewn sŵn cefndirol yn ystod adeiladu a gweithredu o fewn cyffiniau'r safle;
- Efaith weledol ac effeithiau ar sefyllfa'r etifeddiaeth ddiwylliannol - cyflwyno i'r dirwedd leol hyd at bum simnai fydd hyd at 40 metr o uchder; ac
- Ecoleg leol – ni ragwelir effeithiau negyddol, dim ond cyfle i wella'r cynefin lleol drwy waith plannu ychwanegol.

## Buddion i'r Gymuned

Byddai'r Prosiect £200 miliwn hwn yn fuddsoddiad sylweddol yn yr ardal a byddai'n cyflawni buddion economaidd arwyddocaol am gyfnod o fan leiaf 25 mlynedd, yn cynnwys:

- Creu hyd at 150 o swyddi yn ystod cyfnod adeiladu o 2 flynedd;
- Creu hyd at 15 o swyddi creffts parhaol ar gyfer y gwaith parhaus o weithredu a chynnal a chadw'r cyfleuster; a
- Chyfleoedd busnes posib' i gyflenwyr lleol.

## Exhibitions in the local area

Members of the APL team will also be present at four local exhibitions from 22 October 2014 to 25 October 2014 to allow those who live in the vicinity of the Project, or those groups and organisations who may have a view on the Project, to find out more information and provide APL with any comments they may have. The exhibitions are shown below:

- Llangyfelach Village Hall, Heol Pentrefelin Road, Llangyfelach, Swansea SA5 7JD  
Wednesday 22 October 2014, 15:00 - 20:00
- Felindre Welfare Hall, Felindre, Swansea SA5 7NA  
Thursday 23 October 2014, 14:00 - 19:00
- Forge Fach Resource Centre, Hebron Road, Clydach, Swansea, SA6 5EJ  
Friday 24 October 2014, 14:00 - 19:00
- Tircoed Village Hall, Y Cyswllt, Tircoed SA4 9QZ  
Saturday 25 October 2014, 09:00 - 13:00

## Get in touch

This consultation will end on 16 November 2014 and APL would welcome your views on or before this date. Please include your name and an address. Responses may be made public, subject to data protection laws.

APL would like to invite your views on:

- The preliminary findings of the assessment as to the likely significant environmental effects of the Project, as described in the PEIR;
- The proposed route option(s) for accessing the Project, as shown in Figure 5.1 in the PEIR non-technical summary; and
- The indicative layout of the power generation plant within the Project site.

The contact details for APL are as follows:

**Phone** 0131 550 3395  
**Email** info@abergellipower.co.uk  
**Post** Freepost RTEY-JYYB-ERSR, Abergelli Power Ltd, 49 York Place, Edinburgh EH1 3JD

## Arddangosfeydd yn yr ardal leol

Bydd aelodau tîm APL hefyd yn bresennol mewn pedair arddangosfa leol o'r 22ain o Hydref, 2014 tan y 25ain o Hydref, 2014 i ganiatáu i'r rheiny sy'n byw yng nghyffiniau'r Prosiect, neu'r grwpiau a'r sefydliadau hynny a all fod â barn am y Prosiect, ganfod mwy o wybodaeth a darparu unrhyw sylwadau a all fod ganddynt i APL. Dangosir yr arddangosfeydd isod:

- Neuadd Bentref Llangyfelach, Heol Pentrefelin, Llangyfelach, Abertawe SA5 7JD  
Mercher, yr 22ain o Hydref, 2014, 15:00 - 20:00
- Neuadd Les Felindre, Felindre, Abertawe SA5 7NA  
lau, y 23ain o Hydref, 2014, 14:00 - 19:00
- Canolfan Adnoddau Forge Fach, Heol Hebron, Clydach, Abertawe, SA6 5EJ  
Gwener, y 24ain o Hydref, 2014, 14:00 - 19:00
- Neuadd Bentref Tircoed, Y Cyswllt, Tircoed SA4 9QZ  
Sadwrn, y 25ain o Hydref, 2014, 09:00 - 13:00

## Cysylltwch â Ni

Bydd yr ymgynghoriad hwn yn dirwyn i ben ar yr 16eg o Dachwedd, 2014 a byddai APL yn croesawu'ch barn ar neu cyn y dyddiad hwn. A fydddechystal â chynnwys eich enw a chyfeiriad. Efallai y gwneir ymatebion yn gyhoeddus, yn amodol ar gyfreithiau diogelu data.

Hoffai APL wahodd eich barn am:

- Ganfyddiadau rhagarweiniol yr asesiad o ran effeithiau amgylcheddol arwyddocaol tebygol y Prosiect, fel a ddisgrifir yn y PEIR;
- Opsiwn (opsiynau) y llwybr arfaethedig ar gyfer mynediad i'r Prosiect, fel a ddangosir yn Ffigwr 5.1 yng nghrynodeb annhechnegol y PEIR; a
- Cynllun dangosol y gwaith cynhyrchu pŵer o fewn safle'r Prosiect.

Mae'r manylion cysylltu ar gyfer APL fel a ganlyn:

**Ffôn** 0131 550 3395  
**E-bost** info@abergellipower.co.uk  
**Post** Freepost RTEY-JYYB-ERSR, Abergelli Power Ltd, 49 York Place, Edinburgh/ Caeredin EH1 3JD

## Exhibitions in the local area

Members of the APL team will also be present at four local exhibitions from 22 October 2014 to 25 October 2014 to allow those who live in the vicinity of the Project, or those groups and organisations who may have a view on the Project, to find out more information and provide APL with any comments they may have. The exhibitions are shown below:

- Llangyfelach Church Hall, Swansea Road, Llangyfelach, Swansea SA5 7JA  
Wednesday 22 October 2014, 15:00 - 20:00
- Felindre Welfare Hall, Felindre, Swansea SA5 7NA  
Thursday 23 October 2014, 14:00 - 19:00
- Forge Fach Resource Centre, Hebron Road, Clydach, Swansea, SA6 5EJ  
Friday 24 October 2014, 14:00 - 19:00
- Tircoed Village Hall, Y Cyswllt, Tircoed SA4 9QZ  
Saturday 25 October 2014, 09:00 - 13:00

## Get in touch

This consultation will end on 16 November 2014 and APL would welcome your views on or before this date. Please include your name and an address. Responses may be made public, subject to data protection laws.

APL would like to invite your views on:

- The preliminary findings of the assessment as to the likely significant environmental effects of the Project, as described in the PEIR;
- The proposed route option(s) for accessing the Project, as shown in Figure 5.1 in the PEIR non-technical summary; and
- The indicative layout of the power generation plant within the Project site.

The contact details for APL are as follows:

**Phone** 0131 550 3395  
**Email** info@abergellipower.co.uk  
**Post** Freepost RTEY-JYYB-ERSR, Abergelli Power Ltd,  
49 York Place, Edinburgh EH1 3JD

## Arddangosfeydd yn yr ardal leol

Bydd aelodau tîm APL hefyd yn bresennol mewn pedair arddangosfa leol o'r 22ain o Hydref, 2014 tan y 25ain o Hydref, 2014 i ganiatáu i'r rheiny sy'n byw yng nghyffiniau'r Prosiect, neu'r grwpiau a'r sefydliadau hynny a all fod â barn am y Prosiect, ganfod mwy o wybodaeth a darparu unrhyw sylwadau a all fod ganddynt i APL. Dangosir yr arddangosfeydd isod:

- Neuadd Eglwys Llangyfelach, Heol Abertawe, Llangyfelach, Abertawe SA5 7JA  
Mercher, yr 22ain o Hydref, 2014, 15:00 - 20:00
- Neuadd Les Felindre, Felindre, Abertawe SA5 7NA  
lau, y 23ain o Hydref, 2014, 14:00 - 19:00
- Canolfan Adnoddau Forge Fach, Heol Hebron, Clydach, Abertawe, SA6 5EJ  
Gwener, y 24ain o Hydref, 2014, 14:00 - 19:00
- Neuadd Bentref Tircoed, Y Cyswllt, Tircoed SA4 9QZ  
Sadwrn, y 25ain o Hydref, 2014, 09:00 - 13:00

## Cysylltwch â Ni

Bydd yr ymgynghoriad hwn yn dirwyn i ben ar yr 16eg o Dachwedd, 2014 a byddai APL yn croesawu'ch barn ar neu cyn y dyddiad hwn. A fydddech cystal â chynnwys eich enw a chyfeiriad. Efallai y gwneir ymatebion yn gyhoeddus, yn amodol ar gyfreithiau diogelu data.

Hoffai APL wahodd eich barn am:

- Ganfyddiadau rhagarweiniol yr asesiad o ran effeithiau amgylcheddol arwyddocaol tebygol y Prosiect, fel a ddisgrifir yn y PEIR;
- Opsiwn (opsiynau) y llwybr arfaethedig ar gyfer mynediad i'r Prosiect, fel a ddangosir yn Ffigwr 5.1 yng nghrynodeb annhechnegol y PEIR; a
- Cynllun dangosol y gwaith cynhyrchu pŵer o fewn safle'r Prosiect.

Mae'r manylion cysylltu ar gyfer APL fel a ganlyn:

**Ffôn** 0131 550 3395  
**E-bost** info@abergellipower.co.uk  
**Post** Freepost RTEY-JYYB-ERSR, Abergelli Power Ltd,  
49 York Place, Edinburgh/ Caeredin EH1 3JD

**FREEPOST RTEY-JYYB-ERSR**

Abergelli Power Ltd,  
49 York Place,  
Edinburgh, EH1 3JD





**Phone:** 0131 550 3395

**Email:** [info@abergellipower.co.uk](mailto:info@abergellipower.co.uk)

**Post:** Freepost RTEY-JYYB-ERSR,  
Abergelli Power Ltd,  
49 York Place,  
Edinburgh EH1 3JD

**Ffôn:** 0131 550 3395

**E-bost:** [info@abergellipower.co.uk](mailto:info@abergellipower.co.uk)

**Post** Freepost RTEY-JYYB-ERSR,  
Abergelli Power Ltd,  
49 York Place,  
Edinburgh / Caeredin EH1 3JD

## **Appendix 4.E: Phase 1 S47 Statutory Consultation: Exhibition Materials**

[4.E IV Feedback form available at statutory exhibitions \(English\)](#)



## Proposed power station at Abergelli Farm, Felindre, Swansea – Statutory Consultation Feedback Form

Thank you for taking the time to visit our exhibition today. Your views on the project are important to us. We would be grateful if you could spare a few moments to complete this feedback form. Please put your completed form into the box provided or post it to: **Freepost RTEY – JYYB – ERSR, Abergelli Power Ltd, 49 York Place, Edinburgh EH 1 3JD**

### Which exhibition did you attend?

Llangyfelach       Tircoed       Felindre       Clydach

### How did you find out about the exhibition today? Please tick all that apply.

Leaflet delivered to home       Abergelli Power website       Poster       Word of mouth

Local newspaper       Other (please specify) \_\_\_\_\_

### Did you comment during the previous non-statutory phase of public consultation in June 2014?

Yes       No

We have since taken into account further information and prepared a Preliminary Environmental Information Report (PEIR) which identifies potential effects associated with the Project. Do you have any comments on the findings of the PEIR? If so, please provide further detail in the space below.

Yes       No

---

---

---

---

If you have any comments about the Project (in particular the proposed route option(s) for accessing the Project and the indicative layout of the power generation plant), or any other information we should be aware of, please share in the space below.

---

---

---

---





We are in the process of developing our proposals as we prepare our application for a development consent order. Did the exhibition provide you with enough information about the project?

Yes  No

If not, please comment in the space below on what further information you would like to see.

---

---

---

Overall, how do you feel about the proposed project at Abergelli Farm?

Supportive  Not Supportive  Neutral  Undecided

If you would like to be kept informed of developments on the project, please give your contact details below.

These details will only be used by the Abergelli Power team to keep you informed about developments - and for no other purpose. Any feedback you leave will not be publicly attributed to you. If you do not want us to contact you, we would appreciate you leaving us your postcode so we can gauge the approximate locations of people who attended today.

Name: \_\_\_\_\_

Address: \_\_\_\_\_

Postcode: \_\_\_\_\_

Email: \_\_\_\_\_



## **Appendix 4.E: Phase 1 S47 Statutory Consultation: Exhibition Materials**

**4.E V** [Feedback form available at statutory exhibitions \(Welsh\)](#)





## Gorsaf bŵer arfaethedig ar Fferm Abergelli, Felindre, Abertawe – Ffurflen Adborth yr Ymgynghoriad Statudol

Diolch am gymryd yr amser i ymweld â'n harddangosfa heddiw. Mae'ch barn am y prosiect yn bwysig inni. Byddem yn ddiolchgar pe gallech neilltuo ychydig funudau i gwblhau'r ffurflen adborth hon. A fydech cystal â rhoi'ch ffurflen wedi'i chwblhau yn y blwch a ddarperir neu'i phostio hi i: **Freepost RTEY – JYYB – ERSR, Abergelli Power Ltd, 49 York Place, Edinburgh / Caeredin EH 1 3JD**

### Pa arddangosfa y gwnaethoch ei mynychu?

Llangyfelach  Tircoed  Felindre  Clydach

### Sut gwnaethoch ddod i wybod am yr arddangosfa heddiw? Ticiwch y cyfan sy'n berthnasol.

Taflen wedi'i danfon i'm cartref  Gwefan Abergelli Power  Poster  Clywed ar lafar gwlad

Papur newyddion lleol  Arall (Nodwch, os gwelwch yn dda). \_\_\_\_\_

### A wnaethoch fwrw sylw yn ystod y cam anstatudol blaenorol o ymgynghori â'r cyhoedd ym mis Mehefin 2014?

Do  Naddo

Rydym wedi rhoi ystyriaeth ers hynny i ragor o wybodaeth ac wedi paratoi Adroddiad Gwybodaeth Amgylcheddol Rhagarweiniol (PEIR) sy'n nodi effeithiau posib' yn gysylltiedig â'r Prosiect. A oes gennych unrhyw sylwadau ar ganfyddiadau'r PEIR? Os oes gennych, a fydech cystal â darparu rhagor o fanylion yn y lle gwag isod, os gwelwch yn dda.

Oes  Nac oes

Os oes gennych unrhyw sylwadau ar y Prosiect (yn enwedig yr opsiwn (opsiynau) ar gyfer y llwybr arfaethedig i gael mynediad i'r Prosiect a chynllun dangosol y gwaith cynhyrchu pŵer), neu unrhyw wybodaeth arall y dylem fod yn ymwybodol ohoni, a fydech cystal â rhannu yn y lle gwag isod, os gwelwch yn dda.

---

---

---





Rydym wrthi yn y gwaith o ddatblygu ein cynigion fel rydym yn paratoi ein cais am orchymyn caniatâd datblygu. A wnaeth yr arddangosfa ddarparu digon o wybodaeth am y prosiect ichi?

Do  Naddo

Os na wnaeth, a fydech cystal â bwrw sylw yn y lle gwag isod yngl n â pha wybodaeth yn rhagor yr hoffech ei gweld.

---

---

---

At ei gilydd, sut ydych yn teimlo am y prosiect arfaethedig ar Fferm Abergelli?

Cefnogol  Diduedd  Heb Benderfynu  Anghefnogol

At ei gilydd, sut ydych yn teimlo am y prosiect arfaethedig ar Fferm Abergelli?

Caiff y manylion hyn ond eu defnyddio gan dîm Abergelli Power i'ch hysbysu'n rheolaidd am ddatblygiadau - ac nid er unrhyw ddiben arall. Ni fydd unrhyw adborth a adawch yn cael ei briodoli'n gyhoeddus i chi. Os nad oes arnoch eisiau inni gysylltu â chi, byddem yn gwerthfawrogi petaech yn gadael eich cod post inni fel ein bod yn gallu mesur bras leoliadau pobl a fynychodd heddiw.

Enw: \_\_\_\_\_

Cyfeiriad: \_\_\_\_\_

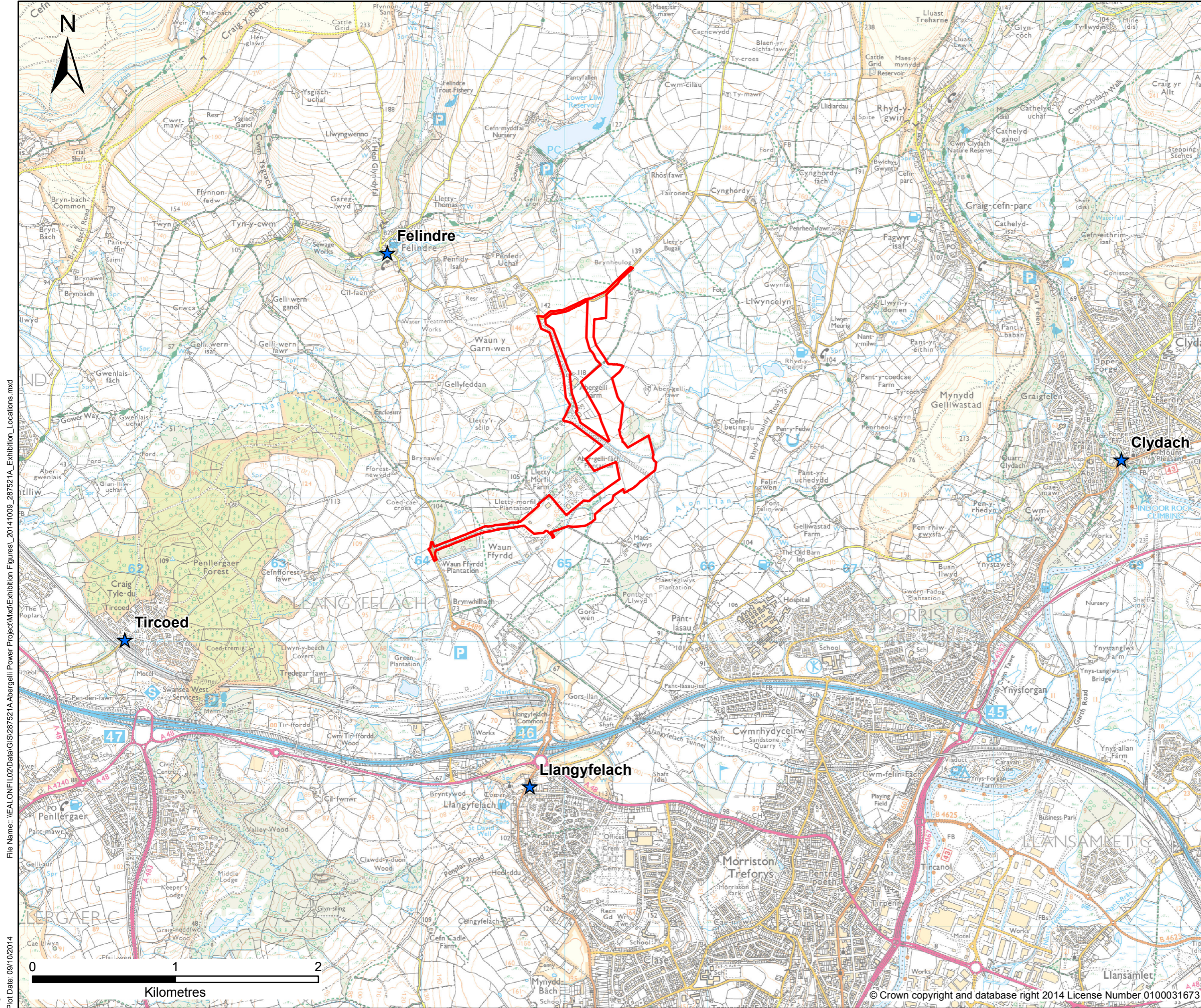
Cod Post \_\_\_\_\_

Cyfeiriad E-bost: \_\_\_\_\_

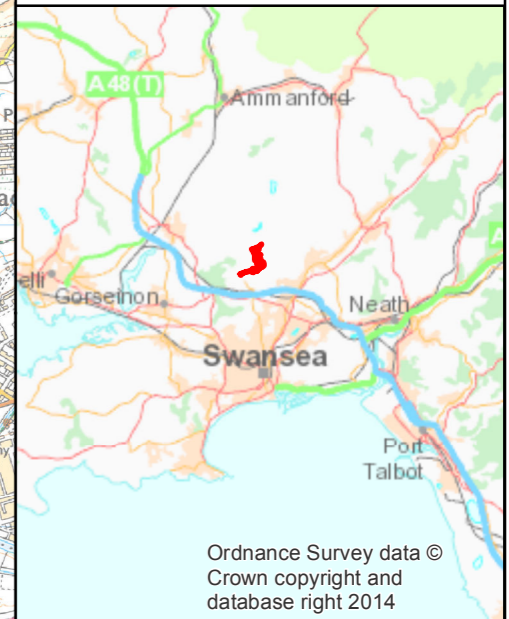


## **Appendix 4.E: Phase 1 S47 Statutory Consultation: Exhibition Materials**

### **4.E VI Additional plans and materials available at statutory exhibitions**



- Project Site
- ★ Exhibition Location



Ordnance Survey data ©  
Crown copyright and  
database right 2014

Rev	Date	Description	By	Chk	App
-----	------	-------------	----	-----	-----

FINAL

**PARSONS  
BRINCKERHOFF**  
6 Devonshire Square,  
London, EC2M 4YE  
Tel: 020 7337 1700 Fax: 020 7337 1701

Client:  
**Abergelli power**

Site/Project:  
Abergelli Power Project

Title:  
Project Site and Exhibition Locations

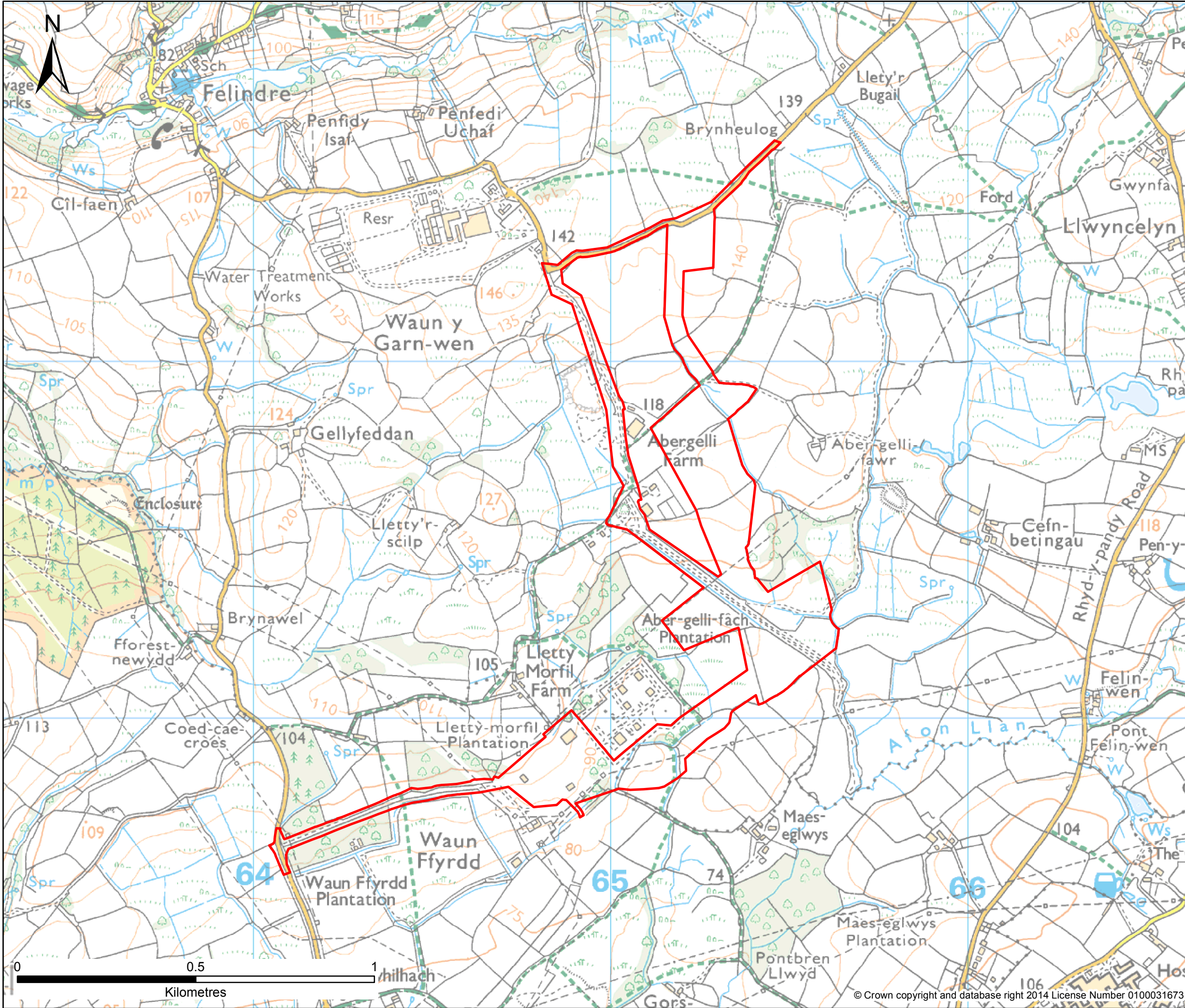
Drawn: CD	Checked: JL
Designed: AH	Approved: AH
Date: 09/10/2014	Scale: 1:25,000 A3 Sheet:
Project Number: 287521A	Drawing Number: -

File Name: \\EALONFLO2\Data\GIS\287521A\Abergelli Power Project\Map\Exhibition Figures\_20141009\_287521A\_Exhibition\_Locations.mxd  
Login: chris.davies  
Plot Date: 09/10/2014

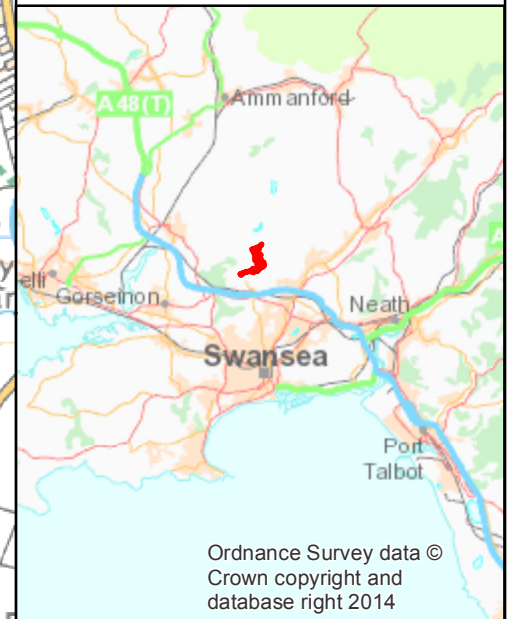


© Crown copyright and database right 2014 License Number 0100031673

© Copyright Parsons Brinckerhoff



Project Site



Ordnance Survey data ©  
Crown copyright and  
database right 2014

Rev	Date	Description	By	Chk	App
-----	------	-------------	----	-----	-----

FINAL

**PARSONS  
BRINCKERHOFF**  
6 Devonshire Square,  
London, EC2M 4YE  
Tel: 020 7337 1700 Fax: 020 7337 1701

Client:  
**Abergelli  
power**

Site/Project:  
Abergelli Power Project

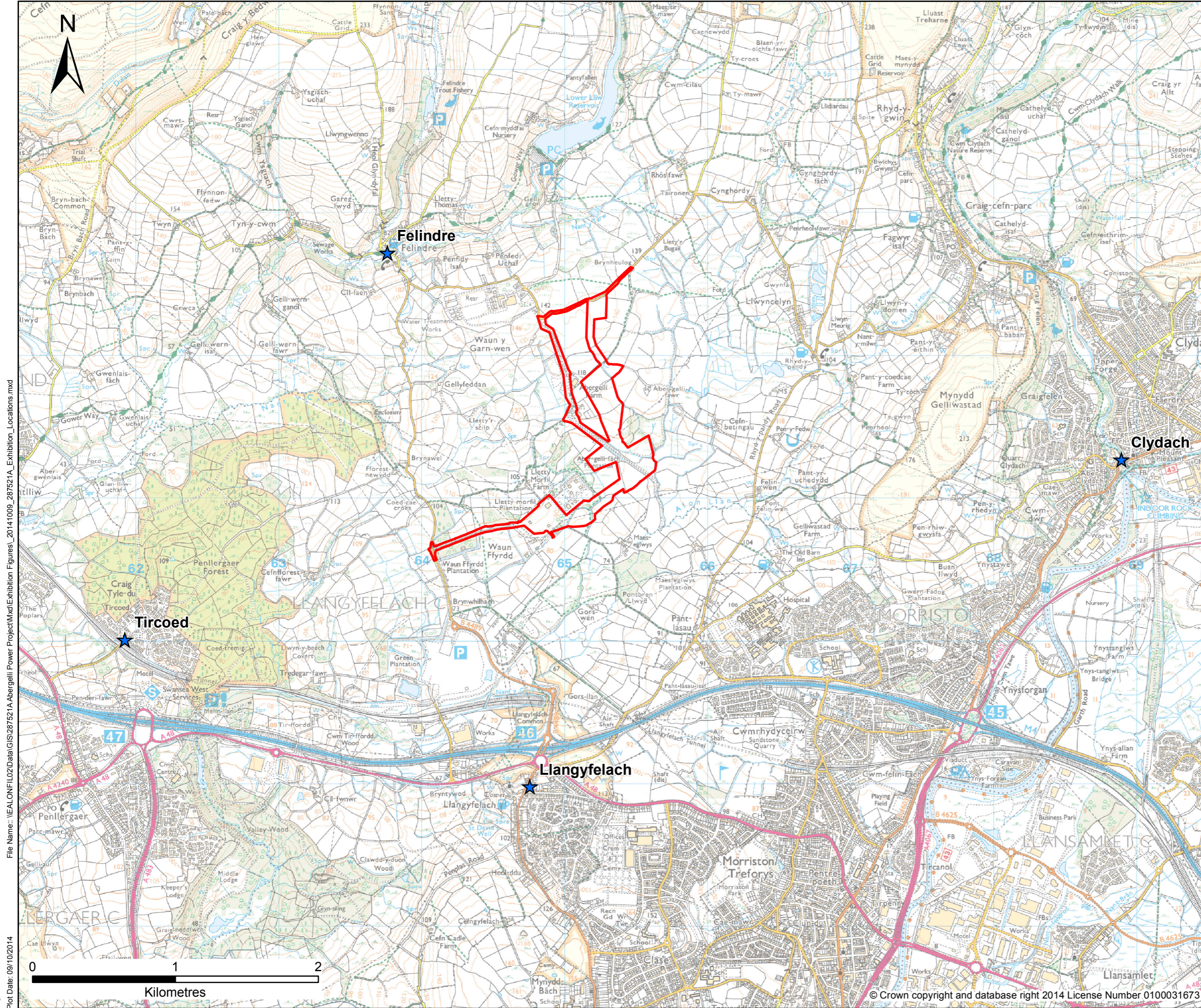
Title:  
Site Location Plan

Drawn: CD	Checked: JL
Designed: AH	Approved: AH
Date: 24/09/2014	Scale: 1:10,000   A3   Sheet:
Project Number: 287521A	Drawing Number: Figure 1.1
	Revision: -

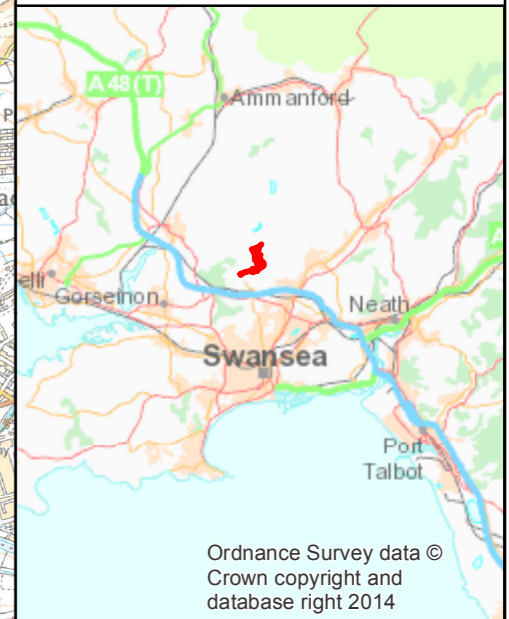
© Crown copyright and database right 2014 License Number 0100031673

© Copyright Parsons Brinckerhoff

File Name: \\EALON\FI\02\Data\GIS\287521A\Abergelli Power Project\Map\PIER Report\_2014\0811\_287521A\_1.1\_Site\_Location\_Plan.mxd  
Login: chris.davies  
Plot Date: 24/09/2014



- Project Site
- ★ Exhibition Location



Ordnance Survey data ©  
Crown copyright and  
database right 2014

Rev	Date	Description	By	Chk	App
-----	------	-------------	----	-----	-----

FINAL

**PARSONS  
BRINCKERHOFF**  
6 Devonshire Square,  
London, EC2M 4YE  
Tel: 020 7337 1700 Fax: 020 7337 1701

Client:  
**Abergelli power**

Site/Project:  
Abergelli Power Project

Title:  
Project Site and Exhibition Locations

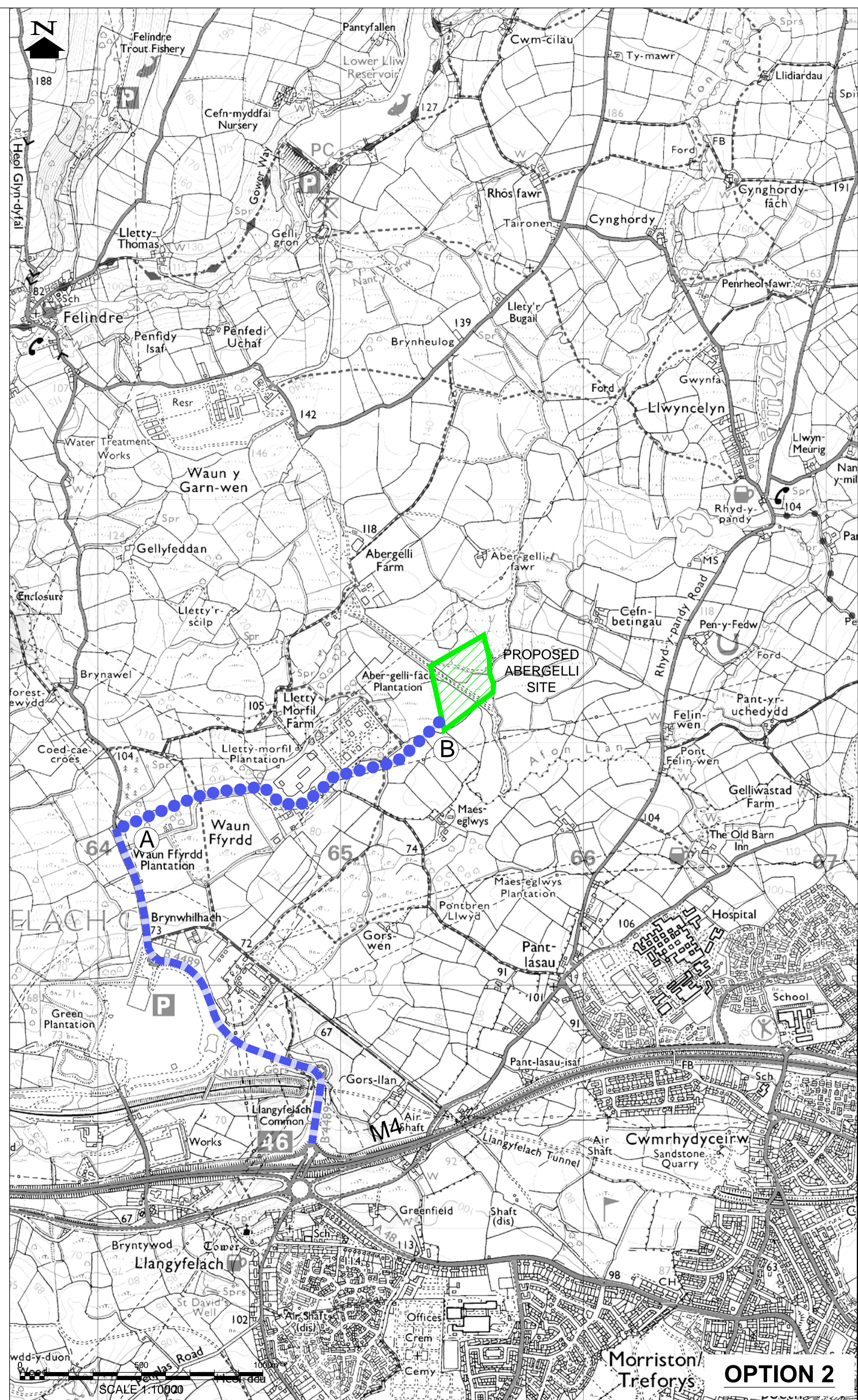
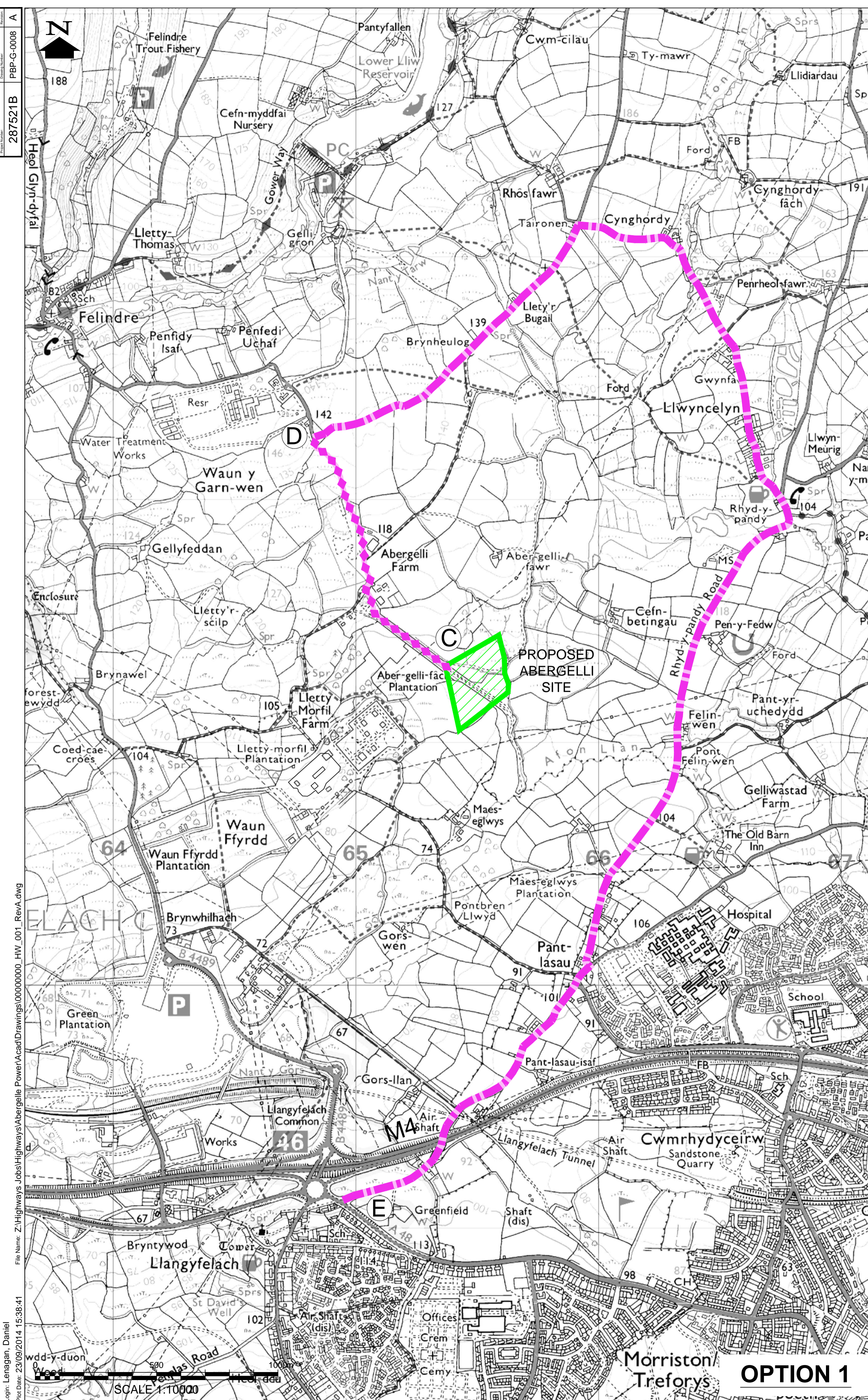
Drawn: CD	Checked: JL
Designed: AH	Approved: AH
Date: 09/10/2014	Scale: 1:25,000 A3 Sheet:
Project Number: 287521A	Drawing Number: -

File Name: \\EALONFLO2\Data\GIS\287521A\Abergelli Power Project\Map\Exhibition Figures\_20141009\_287521A\_Exhibition\_Locations.mxd  
Login: chris.davies  
Plot Date: 09/10/2014



© Crown copyright and database right 2014 License Number 0100031673

© Copyright Parsons Brinckerhoff



- KEY**
- OPTION 1 - PUBLIC ROAD
  - OPTION 1 - PRIVATE ROAD
  - OPTION 2 - PUBLIC ROAD
  - OPTION 2 - PRIVATE ROAD

- NOTES**
1. NEW 6m WIDE ACCESS TRACK TO BE CONSTRUCTED BETWEEN POINTS A AND B.
  2. EXISTING TRACK TO BE WIDENED TO 6m WIDE BETWEEN POINTS C AND D
  3. LOCALISED UPGRADES AND WIDENING TO BE UNDERTAKEN BETWEEN POINTS D AND E.

Rev	Date	Description	By	Chk	App

**FINAL**

**PARSONS BRINCKERHOFF**

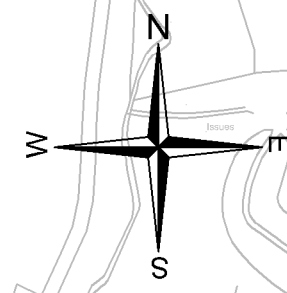
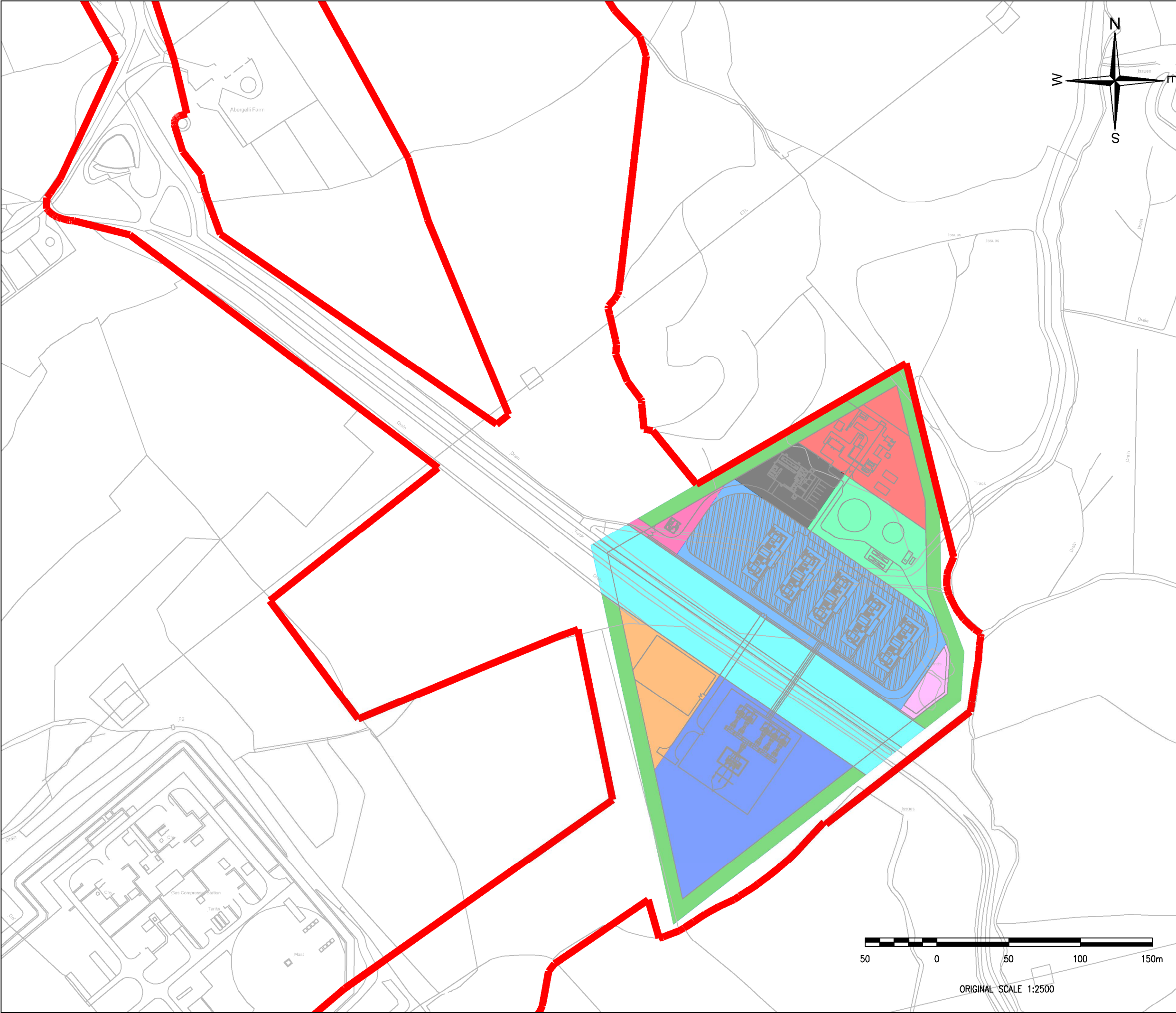
Manchester Technology Centre  
Oxford Road  
Manchester M1 7ED  
Tel: 44-(0)161-200-5000  
Fax: 44-(0)161-200-5001



Site/Project:  
**Abergelli Power Project**

Title:  
**PROPOSED ACCESS ROUTE OPTIONS**

Drawn: K. A. Hume	Checked:
Designed: S. J. Robinson	Approved: S. J. Robinson
Date: 27/01/2014	Scale: 1:10 000
Project Number: 287521B	Figure 2.1
Sheet: A	Revision:



**LEGEND**

	PROJECT SITE BOUNDARY
	Brief Description
	Power Generation Plant - Turbine House
	Power Generation Plant - Gas Receiving Facility
	Power Generation Plant - Electrical Compound
	Power Generation Plant - Water Storage Tanks
	Power Generation Plant - Attenuation Pond
	Power Generation Plant - Control Room and Site Office
	Power Generation Plant - Site Access and Gate House
	Power Generation Plant - Maintenance Compound
	Power Generation Plant - Screening
	Power Generation Plant - Water Pipeline Easement

B	01/10/2014	PROJECT SITE BOUNDARY ADDED	SPS	RAB	WEH
A	03/09/2014	DRAFT ISSUE	ME	MT	MD
Rev	Date	Description	By	Chk	App



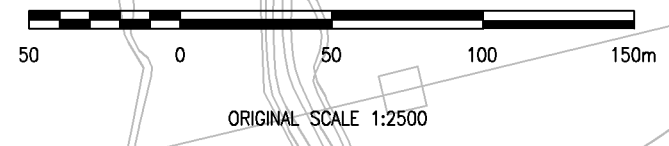
Westbrook Mills  
 Godalming  
 Surrey GU7 2AZ  
 Tel: 44-(0)1483-528400  
 Fax: 44-(0)1483-528989



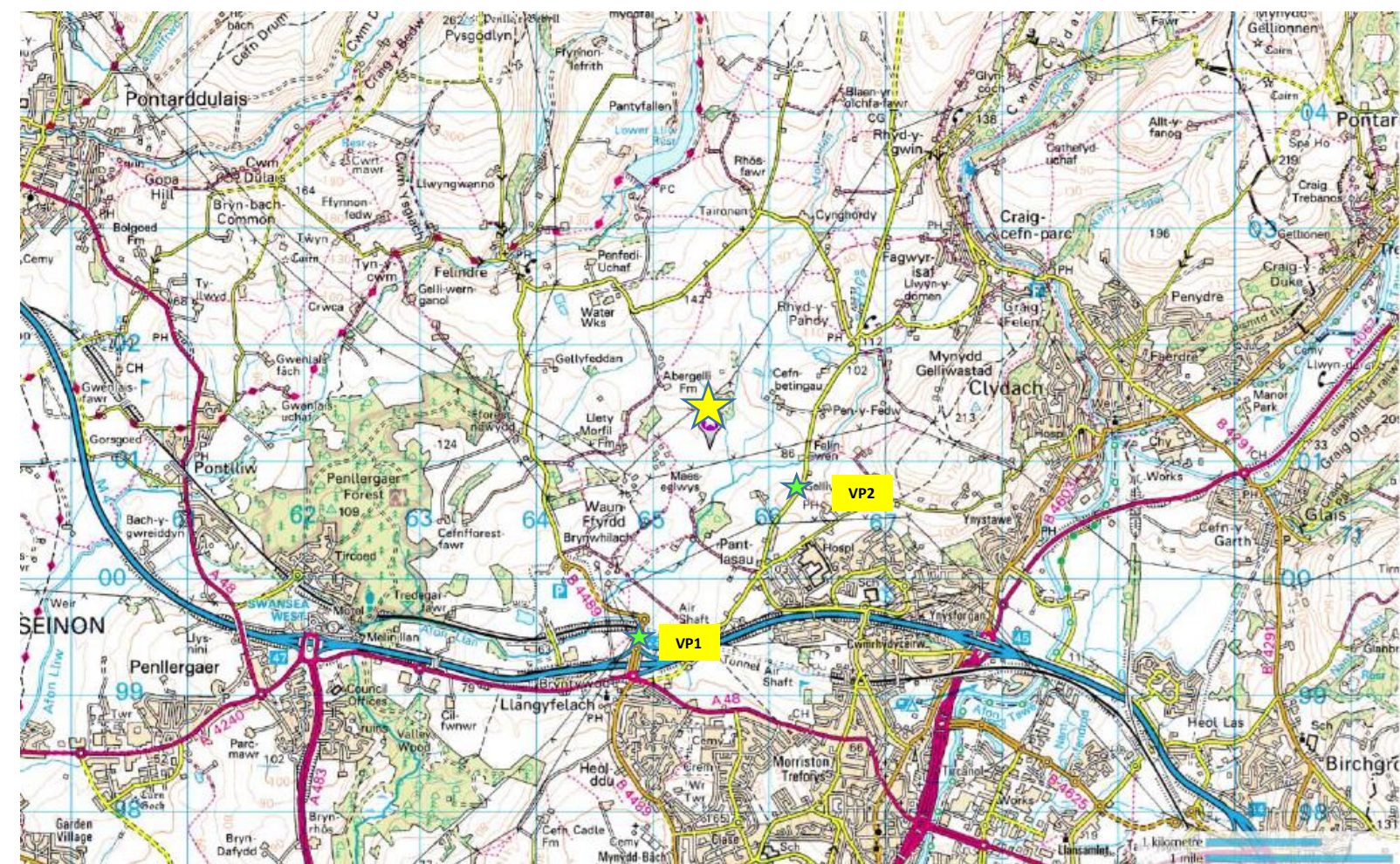
Site/Project:  
**ABERGELLI  
 POWER  
 PROJECT**

Title:  
**INDICATIVE LAYOUT  
 OF GENERATING  
 EQUIPMENT SITE**

Drawn: M.E.	Checked: M.T.		
Designed: M.E.	Approved: M.D.		
Date: 01/10/2014	Scale: 1:2500	A3	Sheet: 1 OF 1
Project Number: 287521B	Drawing Number: PBP-G-012	Revision: B	







★ Project Site

★ Photomontage viewpoints





## **Appendix 4.E: Phase 1 S47 Statutory Consultation: Exhibition Materials**

**4.E VII Photographs of statutory exhibitions at Llangyfelach (22nd October 2014), Felindre (23rd October 2014), Clydach (24th October 2014) and Tircoed (25th October 2014)**

**GEOLOGY, GROUND CONDITIONS AND HYDROGEOLOGY**

**Preliminary information**

- The geological conditions of the proposed Project have been assessed in the preliminary assessment of the Project. The study area for this assessment was the area of the proposed Project and the surrounding area.
- The construction and decommissioning activities associated with the proposed Project will be carried out in accordance with the relevant planning and regulatory requirements.
- The construction of the gas combustion and exhaust systems will result in the emission of various pollutants and greenhouse gases. These emissions will be controlled and monitored in accordance with the relevant regulatory requirements.

**Next steps**

A detailed assessment of the ground conditions and hydrogeology will be carried out in the next stage of the project. This will involve the installation of monitoring equipment and the collection of data on the ground conditions and hydrogeology of the site.

www.abergelli.com

**Proposal to build a gas-fired power station**

**The Key Details of the Project**

- The proposed gas-fired power station will have a capacity of 100MW.
- The station will be located on the site of the former Abergelli Colliery.
- The station will be financed by a private company, Abergelli Power Limited.
- The station will be owned and operated by Abergelli Power Limited.
- The station will be decommissioned at the end of its 25-year life.

**Preliminary environmental information about the Project**

The proposed gas-fired power station will have a number of potential impacts on the environment. These include:

- Visual impacts from the station and its infrastructure.
- Impacts on the landscape and countryside.
- Impacts on the local community.
- Impacts on the local environment.

**Comments and Feedback**

The project team is committed to listening to the views of the local community and to addressing any concerns that may be raised. We would welcome any comments or feedback that you may have on the proposed project.

**Abergelli power**

**Manylion allweddol y Proiect**

- Yn eiddo, gwyddir i'r ffordd y gall y proiect hwn gynyddu'r economi lleol a chael effaith dda ar yr amgylchedd.
- Yn eiddo, gwyddir i'r ffordd y gall y proiect hwn gynyddu'r economi lleol a chael effaith dda ar yr amgylchedd.
- Yn eiddo, gwyddir i'r ffordd y gall y proiect hwn gynyddu'r economi lleol a chael effaith dda ar yr amgylchedd.

**Gwybodaeth allweddol ar gyfer y Proiect**

Yn eiddo, gwyddir i'r ffordd y gall y proiect hwn gynyddu'r economi lleol a chael effaith dda ar yr amgylchedd.

**Manylion am y Proiect**

Yn eiddo, gwyddir i'r ffordd y gall y proiect hwn gynyddu'r economi lleol a chael effaith dda ar yr amgylchedd.

**Yn eiddo, gwyddir i'r ffordd y gall y proiect hwn gynyddu'r economi lleol a chael effaith dda ar yr amgylchedd.**

**Yn eiddo, gwyddir i'r ffordd y gall y proiect hwn gynyddu'r economi lleol a chael effaith dda ar yr amgylchedd.**

**Yn eiddo, gwyddir i'r ffordd y gall y proiect hwn gynyddu'r economi lleol a chael effaith dda ar yr amgylchedd.**



ANFA  
KIT

**TECHNOLOGY AND CULTURAL HERITAGE**

Map showing the location of the proposed gas-fired power station in relation to the Abergelli power station and the surrounding area.

**NOISE AND VIBRATION**

Map showing noise and vibration contours around the proposed gas-fired power station.

**GEOLOGICAL AND GEOTECHNICAL ASSESSMENT**

Map showing geological and geotechnical assessment of the proposed gas-fired power station site.

**Proposal to build a gas-fired power station**

Map showing the proposed gas-fired power station site and the surrounding area.

**Summary of the Project**

The Abergelli Power Station (ASPS) is a gas-fired power station located in Abergelli, North Wales. The station is proposed to be built on the site of the existing Abergelli power station, which was closed in 2002. The proposed station will have a capacity of 1,200 MW and will be able to generate up to 10,000 MWh of electricity per year. The station will also be able to generate up to 10,000 MWh of heat per year. The station will be owned and operated by the Welsh Government.

**Key Features of the Project**

- The station will be a gas-fired power station.
- The station will have a capacity of 1,200 MW.
- The station will be able to generate up to 10,000 MWh of electricity per year.
- The station will also be able to generate up to 10,000 MWh of heat per year.
- The station will be owned and operated by the Welsh Government.

**Benefits of the Project**

- The station will provide a reliable source of electricity and heat for the region.
- The station will create jobs during the construction phase and provide ongoing employment during the operational phase.
- The station will contribute to the Welsh Government's target of generating 10% of the region's electricity from renewable sources by 2020.

**Environmental Impact**

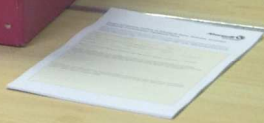
The station will have a low carbon footprint and will be able to generate electricity from a clean and sustainable source. The station will also be able to generate heat, which can be used for industrial and domestic purposes. The station will be designed to minimize its impact on the environment and will be subject to strict environmental controls.

**Conclusion**

The proposed gas-fired power station is a key part of the Welsh Government's energy strategy and will provide a reliable source of electricity and heat for the region. The station will also create jobs and contribute to the Welsh Government's target of generating 10% of the region's electricity from renewable sources by 2020.

**Completed Feedback Forms**

**Ffurflenni Adorth Cyflawn**





**Abergelli power**

### NOISE AND VIBRATION



Noise Sensitive Receptor Locations

...activities, operations and decommissioning phases of the Project have the potential to impact upon noise and vibration levels in the vicinity of the Project.

...studies undertaken to date have indicated that the predicted noise effects during the construction and decommissioning of the Project will not exceed the noise and vibration criteria as a result of construction activities. No significant noise or vibration impacts are predicted for all phases of the Project on receptors.

...has been undertaken for the Project. The assessment has included the identification of noise sensitive receptors for the baseline noise levels. The assessment also includes a prediction of the noise and vibration levels during the construction and decommissioning of the Project. The assessment also includes a prediction of the noise and vibration levels during the operation of the Project.

...when full details of all short-term or temporary noise or vibration impacts are available.

[www.ab...](http://www.ab...)

**Abergelli power**

Proposed to build a peat-burning power station



...the project area.

**Abergelli power**

Completed Feedback Forms  
Pffurfienni Adroeth Cytfaen

Cyngor i adeiladu gornaf bwrw sy'n rhyngwngl ar mynydd

...the project area.



### Proposal to build a gas-fired power station

#### The key details of the Project

- The construction, operation and decommissioning of a single cycle gas turbine power station generating a maximum capacity of 250 MW
- The gas for the power generation plant comes off site of developments for gas to be piped to the power station
- The power generation plant will be built on the site of the existing National Grid compressor station
- The decommissioning of the power generation plant will be carried out in accordance with the relevant regulations
- The decommissioning of the power generation plant will be carried out in accordance with the relevant regulations
- The decommissioning of the power generation plant will be carried out in accordance with the relevant regulations

#### Preliminary environmental information about the Project

- The construction, operation and decommissioning of the power station will be carried out in accordance with the relevant regulations
- The construction, operation and decommissioning of the power station will be carried out in accordance with the relevant regulations
- The construction, operation and decommissioning of the power station will be carried out in accordance with the relevant regulations
- The construction, operation and decommissioning of the power station will be carried out in accordance with the relevant regulations
- The construction, operation and decommissioning of the power station will be carried out in accordance with the relevant regulations



#### Development of the Project

- The construction, operation and decommissioning of the power station will be carried out in accordance with the relevant regulations
- The construction, operation and decommissioning of the power station will be carried out in accordance with the relevant regulations
- The construction, operation and decommissioning of the power station will be carried out in accordance with the relevant regulations
- The construction, operation and decommissioning of the power station will be carried out in accordance with the relevant regulations
- The construction, operation and decommissioning of the power station will be carried out in accordance with the relevant regulations

#### Community benefits

- The construction, operation and decommissioning of the power station will be carried out in accordance with the relevant regulations
- The construction, operation and decommissioning of the power station will be carried out in accordance with the relevant regulations
- The construction, operation and decommissioning of the power station will be carried out in accordance with the relevant regulations
- The construction, operation and decommissioning of the power station will be carried out in accordance with the relevant regulations
- The construction, operation and decommissioning of the power station will be carried out in accordance with the relevant regulations



### ENVIRONMENTAL VISUAL IMPACTS

The construction, operation and decommissioning of the power station will be carried out in accordance with the relevant regulations. The construction, operation and decommissioning of the power station will be carried out in accordance with the relevant regulations. The construction, operation and decommissioning of the power station will be carried out in accordance with the relevant regulations.

#### Proposed mitigation measures

- The construction, operation and decommissioning of the power station will be carried out in accordance with the relevant regulations
- The construction, operation and decommissioning of the power station will be carried out in accordance with the relevant regulations
- The construction, operation and decommissioning of the power station will be carried out in accordance with the relevant regulations
- The construction, operation and decommissioning of the power station will be carried out in accordance with the relevant regulations
- The construction, operation and decommissioning of the power station will be carried out in accordance with the relevant regulations



### WATER QUALITY AND RESOURCES



The construction, operation and decommissioning of the power station will be carried out in accordance with the relevant regulations. The construction, operation and decommissioning of the power station will be carried out in accordance with the relevant regulations. The construction, operation and decommissioning of the power station will be carried out in accordance with the relevant regulations.

#### Preliminary information and assessment

The construction, operation and decommissioning of the power station will be carried out in accordance with the relevant regulations. The construction, operation and decommissioning of the power station will be carried out in accordance with the relevant regulations. The construction, operation and decommissioning of the power station will be carried out in accordance with the relevant regulations.

www.abergellipower.co.uk

www.abergellipower.co.uk